

Torquay Girls Grammar School

Safeguarding and Child Protection Policy

Policy Information	
Policy Owner	Headteacher
Issue Version	3.2
Approving Committee	Full Trust Board
Adopted Date	September 2020
Review Cycle	Annual
Last Review Date	September 2023
Next Review Date	September 2024

Updated in line with “Keeping Children Safe in Education (KCSIE) September 2023”

COVID-19

There are currently no specific measures in place affecting the child protection and safeguarding policy. Should Government or Local authority advice alter and/or new guidance issued, Torquay Girls’ Grammar School will review its Child Protection and Safeguarding policy and where necessary add a supporting appendix. This new addition to the Child Protection and Safeguarding policy once ratified will be shared with all staff.

Contents

1. Key facts	Page 3
2. Safeguarding Statement and key personnel	Page 3
3. Terminology	Page 4
4. Introduction	Page 4
5. Policy Principles	Page 4
6. Policy Aims	Page 5
7. Values	Page 5
8. Safe School, Safe Staff	Page 7
9. Roles and Responsibilities	Page 8
10. Confidentiality	Page 11
11. Child Protection Procedures	Page 11
12. Children who are particularly vulnerable	Page 14
13. Anti-Bullying / Cyberbullying	Page 15
14. Racist Incidents	Page 16
15. Radicalisation and Extremism	Page 16
16. Domestic Abuse	Page 16
17. Child Sexual Exploitation (CSE) & Child Criminal Exploitation (CCE)	Page 17
18. Female Genital Mutilation (FGM)	Page 18
19. Forced Marriage	Page 18
20. Honour based abuse	Page 19
21. One Chance Rule	Page 19
22. Mental Health	Page 19
23. Private Fostering Arrangements	Page 20

24. Cared for Children & Previously Cared for Children	Page 20
25. Children Missing Education	Page 20
26. Online Safety	Page 21
27. Child on child sexual violence & sexual harassment	Page 21
28. Youth Produced Sexual Imagery (Sexting)	Page 22
29. Allegations against Staff	Page 24
30. Whistle-blowing	Page 24
31. Physical Intervention	Page 25
32. Confidentiality and Information Sharing	Page 25
33. Linked Policies	Page 26
Appendix 1 – Child on Child abuse policy and procedure	Page 26
Appendix 2 - Recognising signs of child abuse	Page 35
Appendix 3 – Sexual Abuse & Sexual Harassment	Page 39
Appendix 4 – Exploitation (incl. Child Sexual Exploitation & Child Criminal Exploitation and County lines)	Page 40
Appendix 5 – Female Genital Mutilation	Page 42
Appendix 6 – Domestic Abuse (incl. Operation Encompass)	Page 43
Appendix 7 – Indicators of vulnerability to Radicalisation	Page 44
Appendix 8 - Police and Criminal Evidence Act (1984) – code C	Page 46
Appendix 9 – What to do if you have an on-line safety concern?	Page 47
Appendix 10 – Resources	Page 49
Appendix 11 – Contacts including MASH	Page 49
Appendix 12 – Version Control Amendments Table	Page 50

1. Child Protection and Safeguarding Policy

Safeguarding Trustee:	Mr James Stock
Designated Safeguarding Lead:	Mrs Helen Wilkinson
Status & Review Cycle:	Statutory/Annual
Next Review Date:	September 2024

2. Safeguarding and Wellbeing Statement

Torquay Girls' Grammar School recognise our moral and statutory responsibility to safeguard and promote the welfare of all pupils. We endeavour to provide a safe and welcoming environment where children are respected and valued. We are alert to the signs of abuse and neglect and follow our procedures to ensure that children receive effective support, protection, and justice. We do this first and foremost by listening to our children and remembering the principle of the Children's Act 1989 that the welfare of the child is paramount.

We listen to our pupils and take seriously what they tell us, children are aware of the adults they can talk to if they have a concern. When there are concerns for a child's welfare, we may need to share information and work in partnership with other agencies. We will ensure concerns are discussed with parents/carers first unless we have reason to believe that by doing so would be contrary to the child's welfare.

Child protection forms part of the school's safeguarding responsibilities. The Child Protection and Safeguarding policy underpins and guides Torquay Girls' Grammar School's procedures and protocols to ensure its pupils and staff are safe. All our staff understand that it is everyone's responsibility to safeguard and protect children, and the way we try to do this is by developing trusting relationships with children and giving them time to talk to us.

As a school we aspire to a culture of zero tolerance against any sort of unacceptable behaviour. We will take seriously any reports of sexual harassment or child on child abuse or discrimination of any kind. As carers you know your children best, please do not hesitate to contact the key personnel named below to ask for support or to discuss any worries you have for your children and be assured we will do all we can to help. We would also like to emphasise that our responsibilities still apply if your child cannot be in school for any reason so, please do not hesitate to contact us.

Key Personnel

Role	Name	Email	Telephone
Designated Safeguarding Lead (DSL)*/**	Mrs Helen Wilkinson	hwilkinson@tggsacademy.org	01803 613215
Deputy DSL(s)*/**	Ms Ruth Stacey Mrs Amy West	rstacey@tggsacademy.org awest@tggsacademy.org	01803 613215 01803 613215
Headteacher*/**	Ms Sarah Forster	Via Mrs Louise Rumbelow lrumbelow@tggsacademy.org	01803 613215
Chair of Trustees*/**	Mrs Louisa Brown	Via Mrs Abigail Henwood ahenwood@tggsacademy.org	01803 613215
Safeguarding Trustee*/**	Mr James Stock	Via Mrs Abigail Henwood ahenwood@tggsacademy.org	01803 613215

*Out of hours contact details will be made available to staff

**Holiday/emergency contacts will be shared with the appropriate agencies and LA safeguarding boards/hubs

3. Terminology

Safeguarding and promoting the welfare of children is defined as:

- protecting children from maltreatment.
- preventing impairment of children's mental and physical health or development.
- ensuring that children grow up in circumstances consistent with the provision of safe and effective care; and
- taking action to enable all children to have the best outcomes.

Child Protection is a part of safeguarding and promoting welfare. It refers to the activity that is undertaken to protect specific children who are suffering, or are likely to suffer, significant harm.

Staff refers to all those working for or on behalf of the school, full or part time, temporary or permanent, in either a paid or voluntary capacity.

Child includes everyone under the age of 18.

Parents refers to birth parents and other adults who are in a parenting role, for example stepparents, foster carers and adoptive parents and LA corporate parents.

4. Introduction

The following safeguarding legislation and guidance has been considered when drafting this policy:

- Section 175 of the Education Act 2002 (maintained schools only)
- The Safeguarding Vulnerable Groups Act 2006
- The Teacher Standards 2012
- Working Together to Safeguarding Children 2018
- Keeping Children Safe in Education (KCSEI 2023)
- Education and Training (Welfare of Children) Act 2021 (Post 16 providers)
- Information Sharing 2018
- What to do if you're worried a child is being abused 2015
- The Equality Act 2010

5. Policy Principles

The welfare of the child is paramount.

All children regardless of age, gender, culture, language, race, ability, sexual identity or religion have equal rights to protection, safeguarding and opportunities.

We recognise that all adults, including temporary staff¹, volunteers and trustees, have a full and active part to play in protecting our pupils from harm and have an equal responsibility to act on any suspicion or concern that may suggest a child is at risk of harm. All staff believe that our school should provide a caring, positive, safe, and stimulating environment that promotes the social, physical, mental wellbeing and moral development of the individual child. Pupils and staff involved in child protection issues will receive appropriate support and supervision.

¹ Wherever the word "staff" is used, it covers ALL staff on site, including ancillary supply and self-employed staff, contractors, volunteers working with children etc. and trustees.

6. Policy Aims

Safeguarding incidents and/or behaviours can be associated with factors outside the school or college and abusers can be both adult/s to child/ren or child/ren to child/ren (child on child). All staff, but especially the designated safeguarding lead (or deputy) should be considering the context within which such incidents and/or behaviours occur. This is known as contextual safeguarding, which simply means assessments of children should consider whether wider environmental factors are present in a child's life that are a threat to their safety and/or welfare. These can also be considered as extra-familial contexts.

To ensure the Designated Safeguarding Lead (or deputy) and all staff will give full consideration to the use of appropriate assessments, resources and agency support when identifying the factors present in a child's life that are a threat to their safety and/or welfare. (Familial or contextual.)

To demonstrate the school's commitment with regard to safeguarding and child protection to pupils, parents, and other partners.

To support the child's development in ways that will foster security, confidence, and independence.

To provide an environment in which children and young people feel safe, secure, valued, and respected, and feel confident to, and know how to approach adults if they are in difficulties, believing they will be effectively listened to.

To raise the awareness of all teaching and non-teaching staff of the need to safeguard children and of their responsibilities in identifying and reporting possible cases of abuse.

To provide a systematic means of monitoring children known or thought to be at risk of harm, and ensure we, the school, contribute to assessments of need and support packages for those children.

To emphasise the need for good levels of communication between all members of staff.

To develop a structured procedure within the school which will be followed by all members of the school community in cases of suspected abuse.

To develop and promote effective working relationships with other agencies, especially the Police, healthcare and Multi agency safeguarding hub (MASH).

To ensure that all staff working within our school who have substantial access to children have been checked as to their suitability, including verification of their identity, qualifications, and a satisfactory DBS check (according to guidance)², and a single central record is kept for audit.

7. Values

Supporting Children.

We recognise that a child who is abused or is a witness to violence may feel helpless and humiliated, may blame themselves, and find it difficult to develop and maintain a sense of self-worth.

We recognise that the school may provide the only stability in the lives of children who have been abused or who are at risk of harm.

² Guidance regarding DBS checks recently updated by the Protection of Freedoms Act 2012

We accept that research shows that the behaviour of a child in these circumstances may range from that which is perceived to be normal to aggressive or withdrawn as well as exhibiting signs of mental health problems.

We understand the impact on a child's mental health, behaviour and education when experiencing difficulties, abuse and/or neglect.

Our school will support all children by:

- encouraging self-esteem and self-assertiveness, through the curriculum as well as our relationships, whilst not condoning aggression or bullying.
- promoting a caring, safe, and positive environment within the school.
- responding sympathetically to any requests for time out to deal with distress and anxiety.
- offering details of helplines, counselling, or other avenues of external support.
- liaising and working together with all other settings, support services and those agencies involved in the safeguarding of children.
- notifying the relevant Multi Agency Safeguarding Hub (MASH) as soon as there is a significant concern. (This could be Torbay, Devon, Somerset or Plymouth depending on where the student lives.)
- providing continuing support to a child about whom there have been concerns who leaves the school by ensuring that appropriate information is copied under confidential cover to the child's new setting and ensuring the school medical records are forwarded as a matter of priority.
- children are taught to understand and manage risk through our personal, social, health and economic (PSHE) education and Relationship and Sex Education and through all aspects of school life. This includes online safety;
- by accessing and utilising the necessary resources, guidance, and toolkits to support the identification of children requiring mental health support, support services and assessments and the subsequent systems and processes;
- and reassuring victims that they are being taken seriously and that they will be supported and kept safe.

We recognise that the school plays a significant part in the prevention of harm to our children by providing children with good lines of communication with trusted adults, supportive friends, and an ethos of protection.

The school community will therefore:

- work to establish and maintain an ethos where children feel secure, are encouraged to talk, and are always listened to.
- include regular consultation with children e.g., through safety questionnaires, participation in anti-bullying week, asking children to report whether they have had happy/sad lunchtimes/playtimes.
- ensure that all children know there are adults in the school whom they can approach if they are worried or in difficulty.
- include safeguarding across the curriculum, including PSHE and opportunities which equip children with the skills they need to stay safe from harm and to know to whom they should turn for help; this will include anti-bullying work, online-safety, road safety, pedestrian, and cycle training; provide focussed activities to prepare key year groups for transition to new settings and/or key stages e.g., more personal safety/independent travel; and
- ensure all staff, pupils and parents are aware of school guidance for their use of mobile technology and the safeguarding issues around the use of mobile technologies and their associated risks have been shared.

8. Safe School, Safe Staff

We will ensure that:

- all staff, trustees and volunteers read and understand KCSiE 2023 as required and relevant to their role at the school and sign to say they have read and understood it;
- all staff receive information about the school's safeguarding arrangements, the school's safeguarding statement, staff behaviour policy (code of conduct)³, child protection and safeguarding policy, behaviour policy, the safeguarding response to children who go missing from education, the role and names of the Designated Safeguarding Lead and their deputies, and sign to say they have read, understood, and will abide by it;
- all staff receive safeguarding and child protection information, including online safety, at induction;
- all staff receive safeguarding and child protection training, including online safety, in line with advice from Torbay Safeguarding Children Partnership (TSCP) and Devon Children and Families Partnership which is regularly updated (for example, via email, e-bulletins and staff meetings), as required, but at least annually;
- all members of staff are trained in and receive regular updates in online safety and reporting concerns;
- all staff and trustees have annual Level 2 child protection awareness training, updated by the DSL as appropriate, to maintain their understanding of the signs and indicators of abuse;
- all staff who are trained to Level 3 safeguarding wear a Yellow lanyard so they can be quickly identified by students and staff
- the Child Protection and Safeguarding policy is made available via the school website or other means and that parents/carers are made aware of this policy and their entitlement to have a copy can be obtained via the website. All parents/carers are made aware of the responsibilities of staff members regarding child protection procedures through the publication of the Child Protection and Safeguarding policy;
- the school provides a coordinated offer of Early Help when additional needs of children are identified and contributes to early help arrangements and inter-agency working and plans; assessments and plans are recorded on the Children's services database (Paris system or the R4C system);
- our vetting policy will seek to ensure the suitability of adults working with children on school sites at any time, for example, by having evidence of DBS checks having been undertaken;
- any visits to school by professionals will be booked in advance and the DSL made aware;
- community users organising activities for children are aware of the school's Child Protection and Safeguarding policy, guidelines, and procedures; and
- The name of the designated members of staff for child protection, the DSL/DDSL are clearly advertised in the school with a statement explaining the school's role in referring and monitoring cases of suspected abuse.

9. Roles and Responsibilities

All members of The Governing Body understand and fulfil their responsibilities, namely, to ensure that there is an effective Child Protection and Safeguarding policy together with a staff behaviour policy (code of conduct).

³ The code of conduct should include acceptable use of technology, staff & pupil relationship boundaries and communications, including the use of social media.

Child protection, safeguarding, recruitment and managing allegations policies and procedures, including the staff behaviour policy (code of conduct), are consistent with TSCP guidance and statutory requirements, are reviewed annually and that the Child Protection and Safeguarding policy is publicly available on the school website or by other means.

Ensures that all staff including temporary staff and volunteers are provided with the school's child protection and safeguarding policy and staff Code of Conduct.

All staff have read the appropriate sections of Keeping Children Safe in Education (2023) and mechanisms are in place to assist staff in understanding and discharging their roles and responsibilities as set out in the guidance.

The school operates a safer recruitment procedure that includes statutory checks on staff suitability to work with children and disqualification by association regulations and by ensuring that there is at least one person on every recruitment panel who has completed safer recruitment training. The school undertakes online searches and informs prospective candidates of this.

The school has procedures for dealing with allegations of abuse against staff (including the Headteacher), supply staff, volunteers and against other children and that a referral is made to the DBS if a person in regulated activity has been dismissed or removed due to safeguarding concerns or would have had they not resigned.

A member of the Governing Body/Board, usually the Chair, is nominated to liaise with the local authority (LA) on Child Protection issues and in the event of an allegation of abuse made against the Headteacher.

A member of the senior leadership (SLT) team has been appointed as the Designated Safeguarding Lead (DSL) by the Governing Body/Board who will take lead responsibility for safeguarding and child protection and that the role is explicit in the role holder's job description.

On appointment, the DSL and deputies undertake appropriate Level 3 identified training offered by TSCP or other provider every two years.

All professionals working consistently with vulnerable pupils will receive robust supervision

All other staff have safeguarding training updated as appropriate; but at least annually.

At least one member of the governing body has completed safer recruitment training to be repeated every five years.

Children are taught about safeguarding (including online safety) as part of a broad and balanced curriculum covering relevant issues through personal social health and economic education (PSHE) and/or for maintained schools through relationship and sex education (RSE).

Appropriate safeguarding responses are in place for children who go missing from education, particularly on repeat occasions, to help identify the risk of abuse and neglect including sexual abuse or exploitation and to help prevent the risks of their going missing in future.

Appropriate online filtering and monitoring systems are in place. All staff have training and an understanding of monitoring and filtering online content. The statutory standards are met to ensure that filtering and monitoring systems are effective and reviewed every half term.

Enhanced DBS checks (without barred list checks unless the trustee is also a volunteer at the school) are in place for all Trustees.

Any weaknesses in Child Protection are remedied immediately.

The Headteacher will ensure that:

- the Child Protection and Safeguarding policy is effective, and procedures are implemented and followed by all staff.
- sufficient time, training, support, resources, including cover arrangements where necessary, is allocated to the DSL and deputy DSLs to carry out their roles effectively, including the assessment of pupils and attendance at child protection and other necessary meetings.
- where there is a safeguarding concern that the child's wishes, and feelings are considered when determining what action to take and what services to provide.
- systems are in place for children to express their views and give feedback which operate with the best interest of the child at heart.
- all staff feel able to raise concerns about poor or unsafe practice and that such concerns are handled sensitively and in accordance with the whistle-blowing procedures.
- pupils are provided with opportunities throughout the curriculum to learn about safeguarding, including keeping themselves safe online.
- they liaise with the Local Authority Designated Officer (LADO), before taking any action and on an ongoing basis, where an allegation is made against a member of staff, supply staff or volunteer; and
- anyone who has harmed or may pose a risk to a child is referred to the Disclosure and Barring Service.

The Designated Safeguarding Lead (DSL)

- holds ultimate responsibility for safeguarding and child protection (including online safety) in the school and is a member of the SLT;
- will liaise with the Headteacher to inform her of issues – especially ongoing enquiries under section 47 of the Children Act 1989 and police investigations. This should include being aware of the requirement for children to have an Appropriate Adult – see Appendix 12
- will liaise with the Headteacher to ensure the school fully adheres to the DfE Searching, screening and confiscation guidance for schools paying particular attention to the requirements in respect of strip searching and the encouragement to involve parents in decision making.
- acts as a source of support and expertise in carrying out safeguarding duties for the whole school community;
- will have the necessary knowledge and understanding to recognise possible children at risk of contextual and/or extra familial abuse or exploitation;
- encourages a culture of listening to children and taking account of their wishes and feelings;
- is appropriately trained with updates every two years and will refresh their knowledge and skills at regular intervals but at least annually;
- will refer a child if there are concerns about possible abuse, to the MASH⁴, and act as a focal point for staff to discuss concerns. Enquiries⁵ must be followed up in writing, if referred by telephone;
- will keep detailed, accurate records, either written or using appropriate online software, of all concerns about a child even if there is no need to make an immediate referral;
- will ensure that all such records are kept confidential, stored securely and are separate from pupil records, until the child's 25th birthday;
- will ensure that an indication of the existence of the additional file is marked on the pupil records;
- will ensure that when a pupil leaves the school, relevant child protection information is passed to the new school (separately from the main pupil file) within 5 days for an in – year transfer or

⁴ All new enquiries go to the MASH 01803 2018100. In an emergency out of hours referrals can be made to the Emergency Duty Team on 0300 456 4876 or Police. Devon MASH 03451551071

⁵ Online forms are available via [Hub - Torbay Safeguarding Children Partnership](#) or [Devon County Council](#)

within the first 5 days of the start of a new term to allow the new school or College to have support in place for when the child arrives ensuring secure transit and that confirmation of receipt is obtained;

- in addition to the child protection file, the designated safeguarding lead should also consider if it would be appropriate to share any information with the DSL of the new school or college in advance of a child leaving; for example, information that would allow the new school or college to continue supporting victims of abuse and have that support in place for when the child arrives. All transfers should be made securely;
- will liaise with the LA, its safeguarding partners and work with other agencies and professionals in line with Working Together to Safeguard Children 2018;
- has a working knowledge of Torbay Safeguarding Children Partnership (TSCP) and Devon Children Family Partnership (DCFP) procedures;
- will ensure that either they, or another staff member, attend case conferences, core groups, or other multi-agency planning meetings; contribute to assessments, and provide a report where required which has been shared with the parents/carers;
- will ensure that any pupil currently with a child protection plan who is absent in the educational setting without explanation for two days is referred to their social worker;
- will ensure that all staff sign to say they have read, understood, and agree to work within the school's child protection policy, behaviour policy, staff Code of Conduct and Keeping Children Safe in Education 2022 and ensure that the policies are used appropriately;
- will organise child protection and safeguarding induction, regularly updated training, and provide a minimum of annual updates on (including online safety) for all school staff, keep a record of attendance and address any absences;
- will contribute to and provide, with the Headteacher and Chair of Trustees, the "Audit of Statutory Duties and Associated Responsibilities" (S175/157 audit) to be submitted annually to the Education Team working on behalf of Torbay Council;
- understands locally agreed processes for providing early help and intervention and will support members of staff where Early Help is appropriate, or completion of the exploitation tool is necessary; and
- will ensure that the name of the designated members of staff for Child Protection, the Designated Safeguarding Lead, and deputies, are clearly advertised in the school, with a statement explaining the school's role in referring and monitoring cases of suspected abuse.

The Deputy Designated Safeguarding Leads (DDSLs):

- are trained to the same standard as the Designated Safeguarding Lead and, in the absence of the DSL, carries out those functions necessary to ensure the ongoing safety and protection of pupils. In the event of the long-term absence of the DSL the deputy will assume all the functions above.

All School Staff:

- understand that it is everyone's responsibility to safeguard and promote the welfare of children and that they have a role to play in identifying concerns, sharing information, and taking prompt action;
- consider, always, what is in the best interests of the child;
- have a role to play in ensuring there is a whole school approach to safeguarding, including promoting a culture of zero tolerance towards any form of abuse, including child on child abuse;
- will be aware of the indicators of abuse and neglect both familial and contextual; and recognise that contextual harm can take a variety of different forms;
- know how to respond to a pupil who alleges or appears to be the victim of abuse through delivery of 'Working together to Safeguard Children', and 'What to do if you're worried a child is being abused';

- will refer any safeguarding or child protection concerns to the DSL or if necessary, where the child is at immediate risk to the police or MASH;
- will be aware of the TSCP Professional Differences (Escalation) policy⁶ or the duty to report concerns if the DSL fails to do so without reasonable cause;
- are aware of the Early Help process and understand their role within it including identifying emerging problems for children who may benefit from an offer of Early Help, liaising with the DSL in the first instance and supporting other agencies and professionals in an early help assessment through information sharing. In some cases, staff may act as the Lead Professional in Early Help cases;
- will provide a safe and nurturing environment in which children can learn; and
- will be able to reassure victims that they are being taken seriously.

⁶[Link to professional differences policy](#)

10. Confidentiality

Torquay Girls' Grammar School recognises that to effectively meet a child's needs, safeguard their welfare, and protect them from harm the school must contribute to inter-agency working in line with Working Together to Safeguard Children (2018) and share information between professionals and agencies where there are concerns.

All staff must be aware that they have a professional responsibility to share information with other agencies to safeguard children and that the Data Protection Act 2018⁷ is not a barrier to sharing information where the failure to do so would place a child at risk of harm.

All staff must be aware that they cannot promise a child to keep secrets which might compromise the child's safety or wellbeing.

However, we also recognise that all matters relating to child protection are personal to children and families. Therefore, in this respect they are confidential, and the Headteacher or DSLs will only disclose information about a child to other members of staff on a need-to-know basis.

We will always undertake to share our intention to refer a child to MASH with their parents /carers unless to do so could put the child at greater risk of harm or impede a criminal investigation. If in doubt, we will seek advice from the MASH. Torbay Education Safeguarding Service (TESS) Schools can also consult with TESS safeguarding advisors.

11. Child Protection Procedures

Abuse and neglect are forms of maltreatment of a child. Somebody may abuse or neglect a child by inflicting harm or by failing to act to prevent harm. Children may be abused in the family or in an institutional or community setting by those known to them or by others. Abuse can take place wholly online, or technology may be used to facilitate offline abuse. They may be abused by an adult or adults or by another child or children.

Abuse and neglect may also take place outside of the home, (contextual safeguarding) and this may include (but is not limited to), sexual exploitation, criminal exploitation, serious youth violence, radicalisation. Further information about the four categories of abuse; physical, emotional, sexual and neglect, and indicators that a child may be being abused can be found in the appendices.

Any child in any family in any school could become a victim of abuse. Staff should always maintain an attitude of "It could happen here".

There are also several specific safeguarding concerns that we recognise our pupils may experience.

- child missing from education
- child absent from education
- child missing from home or care
- child sexual exploitation (CSE)
- child criminal exploitation (CCE)
- bullying including cyberbullying
- domestic abuse
- drugs
- fabricated or induced illness
- faith abuse
- female genital mutilation (FGM)
- forced marriage
- gangs and youth violence
- gender-based violence/violence against women and girls (VAWG)
- mental health
- private fostering
- radicalisation
- youth produced sexual imagery (sexting)
- teenage relationship abuse
- trafficking
- child on child abuse
- up skirting
- serious violence
- sexual harassment

Staff are aware that behaviours linked to drug taking, alcohol abuse, truanting and sexting put children in danger and that safeguarding issues can manifest themselves via child-on-child abuse. See Appendix 1 for a more detailed description of the school procedures in respect of child-on-child abuse.

We also recognise that abuse, neglect, and safeguarding issues are complex and are rarely standalone events that can be covered by one definition or label. Staff are aware that in most cases multiple issues will overlap one another.

⁷ [Data protection - GOV.UK \(www.gov.uk\)](http://www.gov.uk)

If staff are concerned about a child's welfare

If staff notice any indicators of abuse/neglect or signs that a child may be at risk of harm they should record these concerns on CPOMS and pass it to the DSL and DDSs. **If using an electronic alert, the sender should not assume the DSL will immediately receive this and any serious concerns should be reported in person immediately.** If concerns are discussed in person with the DSL details should also be recorded in writing on CPOMS.

There will be occasions when staff may suspect that a pupil may be at risk but have no 'real' evidence. The pupil's behaviour may have changed, their artwork could be bizarre, and they may write stories or poetry that reveal confusion or distress, or physical or inconclusive signs may have been noticed.

Torquay Girls' Grammar School recognise that the signs may be due to a variety of factors, for example, a parent has moved out, a pet has died, a relative is unwell, or an accident has occurred. However, they may also indicate a child is being abused or needs safeguarding.

- In these circumstances staff will try to give the child the opportunity to talk. It is fine for staff to ask the pupil if they are OK or if they can help in any way. Following an initial conversation with the

pupil, if the member of staff remains concerned, they should discuss their concerns with the DSL and put them in writing on CPOMS. Records should include:

- a clear and comprehensive summary of the concern;
- details of how the concern was followed up and resolved;
- a note of any action taken, decisions reached and the outcome.

If the pupil does begin to reveal that they are being harmed, staff should follow the advice below regarding a pupil making an allegation of abuse or displaying behaviours that suggest they may have been abused.

If a pupil tells a member of staff that they have been abused or behaves in such a way as to lead to a concern they may have been abused:

we recognise that it takes a lot of courage for a child to tell someone they are being abused. They may feel ashamed, guilty, or scared, their abuser may have threatened that something will happen if they tell, they may have lost all trust in adults or believe that what has happened is their fault. Sometimes they may not be aware that what is happening is abuse.

A child who tells/shows that they have been abused may have to tell their story on several subsequent occasions to the police and/or social workers. Therefore, it is vital that their first experience of talking to a trusted adult is a positive one.

During their conversation with the pupil staff will:

- listen to what the child has to say and allow them to speak freely.
- remain calm and not overreact or give any indication of being shocked or alarmed – the pupil may stop talking if they feel they are upsetting the listener.
- reassure the child that it is not their fault and that they have done the right thing in telling someone.
- not be afraid of silences – staff must remember how difficult it is for the pupil and allow them time to talk.
- take what the child is telling them seriously.
- Ask open questions and avoid asking leading questions, where possible allow the child to take the lead.
- limit questions to those necessary to try and obtain a context.
- where sexual abuse has been alleged or an allegation of criminal abuse do not ask additional questions telephone the MASH for advice, however, do not stop the child talking.
- avoid jumping to conclusions, speculation or make accusations.
- not automatically offer any physical touch as comfort. It may be anything but comforting to a child who is being abused.
- avoid admonishing the child for not telling them sooner. Saying things such as ‘I do wish you had told me about it when it started’ may be the staff member’s way of being supportive but may be interpreted by the child to mean they have done something wrong; and
- tell the child what will happen next.

If a pupil talks to any member of staff about any risks to their safety or wellbeing the staff member will let the child know that they will have to pass the information on – staff are not allowed to keep secrets.

The member of staff should write up their conversation as soon as possible on CPOMS in the child’s own words. Staff should make this a matter of priority. If handwritten, the record should be signed and dated, the member of staff’s name should be printed, and it should also detail where the allegation/statement was made and who else was present. The record should be handed to the DSL and will also be scanned and uploaded to the CPOMS system.

Notifying Parents

The school will normally seek to discuss any concerns about a pupil with their parents. This must be handled sensitively and normally the DSL/DDSL will contact the parent in the event of a concern, suspicion, or allegation

However, if the school believes that notifying parents could increase the risk to the child or exacerbate the problem, advice will first be sought from children's MASH e.g., familial sexual abuse.

Where there are concerns about forced marriage or honour-based violence parents should not be informed a referral is being made as to do so may place the child at a significantly increased risk. In some circumstances it would be appropriate to contact the police.

Making a referral

Concerns about a child having been abused should be immediately raised with the DSL who will help decide whether a referral to children's MASH or other support is appropriate in accordance with TSCP interactive threshold tool or Devon Children and Families Partnership Threshold Tool⁸.

⁸ [Interactive Threshold Tool \(torbaysafeguarding.org.uk\)](http://torbaysafeguarding.org.uk) or <https://www.dcfp.org.uk/training-and-resources/threshold-tool/>

If a referral is needed, then the DSL should make this rapidly and there must be systems in place to enable this to happen. However, anyone can make a referral and if for any reason a staff member thinks a referral is appropriate and one hasn't been made, they can and should consider making a referral themselves.

The child (subject to their age and understanding) and the parents will be told that a referral is being made, unless to do so would increase the risk to the child.

If after a referral the child's situation does not appear to be improving the DSL (or the person that made the referral) should press for re-consideration to ensure their concerns have been addressed, and most importantly the child's situation improves.

If a child is in immediate danger or is at risk of harm a referral should be made to children's MASH and/or the police immediately.

Where referrals are not made by the DSL, the DSL should be informed as soon as possible.

Supporting our Staff

We recognise that staff working in the school who have become involved with a child who has suffered harm or appears to be likely to suffer harm may find the situation stressful and upsetting. We will support such staff by providing an opportunity to talk through their anxieties with the DSL and to seek further support as appropriate.

All professionals working consistently with vulnerable pupils will receive robust supervision

12. Children who are particularly vulnerable

Torquay Girls' Grammar School recognises that some children are more vulnerable to abuse and neglect and that additional barriers exist when recognising abuse for some children.

We understand that this increase in risk is due more to societal attitudes and assumptions or child protection procedures which fail to acknowledge children's diverse circumstances, rather than the individual child's personality, impairment, or circumstances.

In some cases, possible indicators of abuse such as a child's mood, behaviour or injury might be assumed to relate to the child's impairment or disability rather than giving a cause for concern. Or a focus may be

on the child's disability, special educational needs, or situation without consideration of the full picture. In other cases, such as bullying, the child may be disproportionately impacted by the behaviour without outwardly showing any signs that they are experiencing it.

Some children may also find it harder to tell others about abuse due to communication barriers, lack of access to a trusted adult or not being aware that what they are experiencing is abuse.

Any child may benefit from early help, but all school and college staff should be particularly alert to the potential need for early help for a child who:

- is disabled and has specific additional needs;
- has special educational needs (regardless of whether they have a statutory education, health, and care plan);
- is a young carer;
- is showing signs of being drawn in to anti-social or criminal behaviour, including gang involvement and association with organised crime groups;
- is frequently missing/goes missing from care or from home;
- is misusing drugs or alcohol themselves;
- is at risk of modern slavery, trafficking, or exploitation;
- is in a family circumstance presenting challenges for the child, such as substance abuse, adult mental health problems or domestic abuse;
- has returned home to their family from care;
- is showing early signs of abuse and/or neglect;
- is at risk of being radicalised;
- is a privately fostered child;
- has an imprisoned parent;
- is experiencing mental health, wellbeing difficulties;
- is persistently absent from education (including persistently absent for part of the school day);
- is at risk of 'honour' based abuse such as FGM or Forced Marriage.
- Is part of or perceived to be part of the LGBTQ+ community.

13. Anti-Bullying/Cyberbullying

Our school policy on anti-bullying is set out in a separate document and acknowledges that to allow or condone bullying may lead to consideration under child protection procedures. This includes all forms e.g., cyber, racist, homophobic and gender related bullying. We keep a record of known bullying incidents which is shared with and analysed by the governing body. All staff are aware that children with SEND and / or differences/perceived differences are more susceptible to being bullied / victims of child abuse.

If the bullying is particularly serious, or the anti-bullying procedures are seen to be ineffective, the Headteacher and the DSL will consider implementing child protection procedures and/or consider legislation regarding hate crimes⁹. The subject of bullying is addressed at regular intervals in PHSE education.

14. Racist Incidents

Our policy on racist incidents is set out separately and acknowledges that repeated racist incidents or a single serious incident may lead to consideration under child protection procedures and/or consider legislation regarding hate crimes. We keep a record of racist incidents and report them to the Local Authority.

15. Radicalisation and Extremism

The Prevent Duty for England and Wales (2015)¹⁰ under section 26 of the Counterterrorism and Security Act 2015 places a duty on education and other children's services to have due regard to the need to prevent people from being drawn into terrorism.

Extremism is defined as 'as 'vocal or active opposition to fundamental British values, including democracy, the rule of law, individual liberty and mutual respect and tolerance of different faiths and beliefs. We also include in our definition of extremism calls for the death of members of our armed forces, whether in this country or overseas.

Some children are at risk of being radicalised; adopting beliefs and engaging in activities which are harmful, criminal, or dangerous.

Torquay Girls' Grammar School is clear that exploitation of vulnerable children and radicalisation should be viewed as a safeguarding concern and follows the Department for Education guidance for schools and childcare providers on preventing children and young people from being drawn into terrorism¹⁰.

Torquay Girls' Grammar School seeks to protect children and young people against the messages of all violent extremism including, but not restricted to, those linked to Islamist ideology, or to Far Right / Neo Nazi / White Supremacist ideology, Irish Nationalist and Loyalist paramilitary groups, and extremist Animal Rights movements.

School staff receive training to help identify early signs of radicalisation and extremism. Indicators of vulnerability to radicalisation are in detailed in Appendix 7.

Opportunities are provided in the curriculum to enable pupils to discuss issues of religion, ethnicity and culture and the school follows the DfE advice Promoting Fundamental British Values as part of SMSC (spiritual, moral, social, and cultural education) in Schools (2014)¹¹.

The school trustees, the Headteacher and the DSL will assess the level of risk within the school and put actions in place to reduce that risk. Risk assessment may include the use of school premises by external agencies, anti-bullying policy and other issues specific to the school's profile, community, and philosophy.

When any member of staff has concerns that a pupil may be at risk of radicalisation or involvement in terrorism, they should speak with the DSL. They should then follow normal safeguarding procedures. If the matter is urgent then Devon & Cornwall Police must be contacted by dialling 999. In non-urgent cases where police advice is sought then dial 101. The Department of Education has also set up a dedicated telephone helpline for staff and trustees to raise concerns around Prevent (020 7340 7264).

16. Domestic Abuse

Domestic abuse represents at least one quarter of all violent crime. It is actual or threatened physical, emotional, psychological, or sexual abuse. It involves the use of power and control by one person over another. It occurs regardless of race, ethnicity, gender, class, sexuality, age, and religion, mental or physical ability. Domestic abuse can also involve other types of abuse.

We use the term domestic abuse to reflect that abusive and controlling behaviours do not necessarily involve physical violence. Slapping, punching, kicking, bruising, rape, ridicule, constant criticism, threats, manipulation, sleep deprivation, social isolation, and other controlling behaviours all count as abuse.

Living in a home where domestic abuse takes place is harmful to children and can have a serious impact on their behaviour, wellbeing and understanding of healthy, positive relationships. Children who witness

domestic abuse are victims of abuse and have suffered or are at risk of significant harm. Staff are alert to the signs and symptoms of a child suffering or witnessing domestic abuse (See Appendix 6).

Government legislation enacted in 2021 recognises that a child who sees or hears, or experiences the effects of, domestic abuse and is related to the person being abused or the perpetrator is also to be regarded as a victim of domestic abuse.

In addition, the age limit for criminal offences related to domestic abuse was lowered from 18 to 16, to recognise that young people can experience abuse in their relationships.

17. Child Sexual Exploitation (CSE) and Child Criminal Exploitation (CCE)

Both CSE and CCE are forms of abuse and both occur where an individual or group takes advantage of an imbalance in power to coerce, manipulate or deceive a child into sexual or criminal activity. This power imbalance could be due to age, gender, sexual identity, cognitive ability, physical strength, status, and /or access to economic or other resources. The abuse could be linked to an exchange for something the victim

⁹[Hate Crime \(campaign.gov.uk\)](https://www.campaign.gov.uk) ¹⁰[Revised Prevent duty guidance: for England and Wales - GOV.UK \(www.gov.uk\)](https://www.gov.uk/government/publications/revised-prevent-duty-guidance-for-england-and-wales) ¹¹[Promoting fundamental British values through SMSC - GOV.UK \(www.gov.uk\)](https://www.gov.uk/government/publications/promoting-fundamental-british-values-through-sm-sc) ¹¹[Promoting fundamental British values through SMSC - GOV.UK \(www.gov.uk\)](https://www.gov.uk/government/publications/promoting-fundamental-british-values-through-sm-sc)

perceives that they need or want and/or will be to the financial benefit or other advantage (such as increase status) of the perpetrator or facilitator. The abuse can be perpetrated by individuals or groups, males or females, and children or adults. The abuse can be a one-off occurrence or a series of incidents over time and range from opportunistic to complex organised abuse. It may involve force and/or enticement-based methods of compliance and may, or may not, be accompanied by violence or threats of violence. Victims can be exploited even when the activity appears consensual, and it should be noted exploitation as well as being physical can be facilitated and/or take place online. More definitions and indicators are included in Appendix 4.

Any concerns that a child is being or is at risk of being sexually or criminally exploited should be passed without delay to the DSL. Torquay Girls' Grammar School is aware there is a clear link between regular school absence/truancy, CSE and CCE. Staff should consider a child to be at potential CSE/CCE risk in the case of regular school absence/truancy and make reasonable enquiries with the child and parents to assess this risk.

The DSL will use the TSCP Exploitation Risk Assessment or Devon Children and Families Partnership Adolescent Safety Framework Safer Me Assessment Available from the Torbay MASH or ¹² on all occasions when there is a concern that a child is being or is at risk of being sexually or criminally exploited or where indicators have been observed that are consistent with a child who is being or who is at risk of being sexually or criminally exploited. The Exploitation Risk Assessment will indicate to the DSL whether a MASH referral is necessary. If the DSL is in any doubt, they will contact TESS or the MASH.

If a child is in immediate danger the police should be called on 999.

Torquay Girls' Grammar School is aware that a child often is not able to recognise the coercive nature of the abuse and does not see themselves as a victim. Consequently, the child may resent what they perceive as interference by staff. However, staff must act on their concerns as they would for any other type of abuse.

Torquay Girls' Grammar School includes the risks of sexual and criminal exploitation in the PHSE and SRE curriculum. Pupils will be informed of the grooming process and how to protect themselves from people

who may potentially be intent on causing harm. They will be supported in terms of recognising and assessing risk in relation to CSE/CCE, including online, and knowing how and where to get help.

18. Female Genital Mutilation (FGM)

Female Genital Mutilation (FGM) is illegal in England and Wales under the FGM Act (2003). It is a form of child abuse and violence against women. A mandatory reporting duty requires teachers to report 'known' cases of FGM in under 18s, which are identified in the course of their professional work, to the police¹³. The duty applies to all persons in Torquay Girls' Grammar School who is employed or engaged to carry out 'teaching work'

In the school, whether or not they have qualified teacher status. The duty applies to the individual who becomes aware of the case to make a report. It should not be transferred to the DSL; however, the DSL should be informed.

If a teacher is informed by a girl under 18 that an act of FGM has been carried out on her or a teacher observes physical signs which appear to show that an act of FGM has been carried out on a girl under 18 and they have no reason to believe the act was necessary for the girl's physical or mental health or for purposes connected with labour or birth, the teacher should personally make a report to the police force in which the girl resides by calling 101. The report should be made by the close of the next working day.

¹² [DCFP Adolescent Safety Framework info and Safer Me Assessment](#)

¹³ [Multi-agency statutory guidance on female genital mutilation - GOV.UK \(www.gov.uk\)](#).

School staff are trained to be aware of risk indicators of FGM which are set out in Appendix 5. Concerns about FGM outside of the mandatory reporting duty should be reported as per Torquay Girls' Grammar School's child protection procedures. Staff should be particularly alert to suspicions or concerns expressed by female pupils about going on a long holiday during the summer vacation period. There should also be consideration of potential risk to other girls in the family and practicing community.

Where there is a risk to life or likelihood of serious immediate harm the teacher should report the case immediately to the police, including dialling 999 if appropriate.

There are no circumstances in which a teacher or other member of staff should examine a girl.

19. Forced Marriage

A forced marriage is a marriage in which one or both people do not (or in cases of people with learning disabilities cannot) consent to the marriage but are coerced into it. Coercion may include physical, psychological, financial, sexual, and emotional pressure. It may also involve physical or sexual violence and abuse.

Forced marriage is an appalling and indefensible practice and is recognised in the UK as a form of violence against women and men, domestic/child abuse, and a serious abuse of human rights. Since June 2014 forcing someone to marry has become a criminal offence in England and Wales under the Anti-Social Behaviour, Crime and Policing Act 2014.

A forced marriage is not the same as an arranged marriage which is common in several cultures. The families of both spouses take a leading role in arranging the marriage but the choice of whether to accept the arrangement remains with the prospective spouses.

School staff should never attempt to intervene directly as a school or through a third party. Contact should be made with MASH.

20. Honour-based Abuse

Honour based abuse (HBA) can be described as a collection of practices, which are used to control behaviour within families or other social groups to protect perceived cultural and religious beliefs and/or honour. Such abuse can occur when perpetrators perceive that a relative has shamed the family and/or community by breaking their honour code.

Honour based abuse might be committed against people who;

- become involved with a boyfriend or girlfriend from a different culture or religion.
- want to get out of an arranged marriage.
- want to get out of a forced marriage.
- wear clothes or take part in activities that might not be considered traditional within a particular culture.

It is a violation of human rights and may be a form of domestic and/or sexual abuse. There is no, and cannot be, honour or justification for abusing the human rights of others.

21. One Chance Rule

This term is used in the FGM Guidance for schools produced by the national FGM centre July 2019 [FGM schools guidance](#). Multi agency statutory guidance dated July 20 [FGM Statutory guidance July 20](#) does not appear to use the term, however, the expression is intended to convey the importance of acting promptly and recognise there may be “only one chance to speak to a pupil who is a potential victim and have just one chance to save a life.

Torquay Girls’ Grammar School are aware that if the victim is not offered support following an allegation that the ‘One Chance’ opportunity may be lost. Therefore, all staff are aware of their responsibilities and obligations when they become aware of potential forced marriage, FGM and HBA cases.

22. Mental Health

Staff will be aware that mental health problems can, in some cases, be an indicator that a child has suffered or is at risk of suffering abuse, neglect or exploitation. Whilst school recognise that only appropriately trained professionals can diagnose mental health problems; staff are able to make day to day observations of children and identify such behaviour that may suggest they are experiencing a mental health problem or be at risk of developing one. School is also aware of the many studies evidencing the impact on the emotional wellbeing of Covid and lockdown and the many adverse experiences children and their families may have faced.

Adverse Childhood Experiences have been shown to impact on a child’s mental health, behaviour, and education through to adolescence and adulthood will be covered in safeguarding awareness training and updates. If staff have a mental health concern about a child that is also a safeguarding concern, they will share this with the DSL or deputy. An informative video produced by NHS Wales can be seen [here](#). School will also refer to the mental health and behaviour in schools guidance¹⁴.

23. Private Fostering Arrangements

A private fostering arrangement occurs when someone other than a parent or close relative cares for a child for a period of 28 days or more, with the agreement of the child’s parents. It applies to children under the age of 16 or 18 if the child is disabled. Children cared for by the local authority or who are placed in

residential schools, children's homes or hospitals are not considered to be privately fostered. Private fostering occurs in all cultures, including British culture and children may be privately fostered at any age.

Torquay Girls' Grammar School recognise that most privately fostered children remain safe and well but are aware that safeguarding concerns have been raised in some cases. Therefore, all staff are alert to possible safeguarding issues, including the possibility that the child has been trafficked into the country.

By law, a parent, private foster carer or other persons involved in making a private fostering arrangement must notify children's services as soon as possible. However, where a member of staff becomes aware that a pupil may be in a private fostering arrangement, they will raise this with the DSL and the DSL will notify MASH of the circumstances.

24. Cared for children and previously cared for children

The most common reason for children becoming cared for is because of abuse and neglect, although there may be other reasons, such as parental poor health. Torquay Girls' Grammar School ensures that staff have the necessary skills and understanding to keep cared for/previously cared for children safe. Appropriate staff have information about a child's cared for legal status and care arrangements, including the level of authority delegated to the carer by the authority looking after the child and contact arrangements with birth parents or those with parental responsibility.

¹⁴[Mental health and behaviour in schools: guidance](#)

The designated teacher for cared for children and the DSL have details of the child's social worker and the name and contact details of the Torbay Council's virtual school head and Devon County Council's virtual school head for children in care.

The designated teacher for cared for children works with the virtual school head to discuss how Pupil Premium Plus funding can be best used to support the progress of cared for children in the school and meet the needs in the child's personal education plan. The designated teacher will follow the statutory guidance 'Promoting the education of Cared for Children'.

25. Children Missing Education / Children Absent from education

Attendance, absence, and exclusions are closely monitored. The school will hold more than one emergency contact number for pupils and students where reasonably possible. A child going missing from education is a potential indicator of abuse and neglect, including sexual abuse and sexual exploitation.

A child who is absent, as well as missing, from education can be warning sign of a range of safeguarding concerns, including sexual abuse, sexual exploitation or child criminal exploitation.

The DSL will monitor unauthorised absences and take appropriate action including notifying the local authority particularly where children go missing on repeat occasions and/or are missing for periods during the school day in conjunction with 'Children Missing Education: Statutory Guidance for Local Authorities'¹⁵.

Staff must be alert to signs of children at risk of travelling to conflict zones, female genital mutilation and forced marriage.

¹⁵[Children missing education - GOV.UK \(www.gov.uk\)](#)

26. Online Safety

Our pupils increasingly use electronic equipment daily to access the internet and share content and images via social media sites such as Tik Tok, Instagram, Snapchat, Facebook, Twitter and many others constantly emerging.

Unfortunately, some adults and other children use these technologies to harm children. The harm might range from sending hurtful or abusive texts or emails, to grooming and enticing children to engage in sexual behaviour such as webcam photography or face-to-face meetings. Pupils may also be distressed or harmed by accessing inappropriate material such as pornographic websites or those which promote extremist behaviour, criminal activity, suicide or eating disorders.

Torquay Girls' Grammar School has an online safety policy which explains how we try to keep pupils safe in school and how we respond to online safety incidents (See flowchart, Appendix 8).

Torquay Girls' Grammar School will also provide advice to parents when pupils are being asked to learn online at home and consider how best to safeguard both pupils and staff.

Pupils are taught about online safety throughout the curriculum and all staff receive online safety training which is regularly updated. The school online safety co-ordinator is Mr Gordon Neighbour.

27. Child on Child Sexual violence and sexual violence and sexual harassment

The DSL, Governing Body/Board and Head Teacher will take due regard to Part 5, KCSiE 2023

In most instances, pupils will behave towards each other in a respectful manner. Where they do not, this will be covered by our behaviour policy. However, some allegations may be of such a serious nature that they may raise safeguarding concerns. Torquay Girls' Grammar School recognise that children can abuse

their peers and that child-on-child abuse can happen in any school. It will not be passed off as 'banter' or 'part of growing up'. The forms of child-on-child abuse are outlined below. Further detail is available in Appendix 1.

- Domestic abuse – an incident or pattern of actual or threatened acts of physical, sexual, financial and/or emotional abuse, perpetrated by an adolescent against a current or former dating partner regardless of gender or sexuality.
- Bullying (including cyberbullying, prejudice-based and discriminatory bullying);
- Child Sexual Exploitation – children under the age of 18 may be sexually abused in the context of exploitative relationships, contexts and situations by peers who are also under 18.
- Harmful Sexual Behaviour – Children and young people presenting with sexual behaviours that are outside of developmentally 'normative' parameters and harmful to themselves and others (For more information, please see Appendix 1).
- Up skirting – which typically involves taking a picture under a person's clothing without them knowing, with the intention of viewing their genitals or buttocks to obtain sexual gratification, or cause the victim humiliation, distress, or alarm.
- Serious Youth Violence¹⁶ – Any offence of most serious violence or weapon enabled crime, where the victim is aged 1-19' i.e., murder, manslaughter, rape, wounding with intent and causing grievous bodily harm. 'Youth violence' is defined in the same way, but also includes assault with injury offences. All staff will receive training so that they are aware of indicators which may signal that child are at risk from or involved with serious violence and crime.

- Initiation/hazing type violence and rituals (this could include activities involving harassment, abuse or humiliation used as a way of initiating a person into a group and may also include an online element); and
- Consensual and non-consensual sharing of nudes and semi nudes images and or videos (also known as sexting or youth produced sexual imagery).

The term child-on-child abuse can refer to all these definitions and a child may experience one or multiple facets of abuse at any one time. We will adopt a whole school approach to addressing child – on child abuse and the policy is detailed in Appendix 1.

There are also different gender issues that can be prevalent when dealing with child-on-child abuse (i.e. girls being sexually touched/assaulted or boys being subjected to initiation/hazing type violence).

Torquay Girls’ Grammar School aims to reduce the likelihood of child-on-child abuse through:

- the established ethos of respect, friendship, courtesy and kindness;
- high expectations of behaviour;
- clear consequences for unacceptable behaviour;
- providing a developmentally appropriate PSHE curriculum which develops pupils’ understanding of healthy relationships, acceptable behaviour, consent and keeping themselves safe;
- systems for any pupil to raise concerns with staff, knowing that they will be listened to, valued and believed;
- robust risk assessments and providing targeted work for pupils identified as being a potential risk to other pupils and those identified as being at risk.

Research indicates that young people rarely disclose child-on-child abuse and that if they do, it is likely to be to their friends. Therefore, Torquay Girls’ Grammar School will also educate pupils in how to support

¹⁶ [Preventing youth violence and gang involvement - Practical advice for schools and colleges \(publishing.service.gov.uk\)](https://www.publishing.service.gov.uk/government/uploads/system/uploads/attachment_data/file/61222/preventing-youth-violence-and-gang-involvement-practical-advice-for-schools-and-colleges.pdf)

their friends if they are concerned about them, that they should talk to a trusted adult in the school and what services they can contact for further advice.

Any concerns, disclosures or allegations of child-on-child abuse in any form should be referred to the DSL using Torquay Girls’ Grammar School’s child protection procedures as set out in this policy. Where a concern regarding child-on-child abuse has been disclosed to the DSL(s), advice and guidance will be sought from MASH and where it is clear a crime has been committed or there is a risk of crime being committed the Police will be contacted.

Working with external agencies the school will respond to the unacceptable behaviour. If a pupil’s behaviour negatively impacts on the safety and welfare of other pupils, then safeguards will be put in place to promote the well-being of the pupils affected and the victim and perpetrator will be provided with support.

28. Youth produced sexual imagery (sexting)

The practice of children sharing images and videos via text message, email, social media, or mobile messaging apps has become commonplace. However, this online technology has also given children the opportunity to produce and distribute sexual imagery in the form of photos and videos. Such imagery involving anyone under the age of 18 is illegal.

Youth produced sexual imagery refers to both images and videos where:

- A person under the age of 18 creates and shares sexual imagery of themselves with a peer under the age of 18.
- A person under the age of 18 shares sexual imagery created by another person under the age of 18 with a peer under the age of 18 or an adult.
- A person under the age of 18 is in possession of sexual imagery created by another person under the age of 18.

All incidents of this nature should be treated as a safeguarding concern and in line with government guidance [Sharing nudes and semi-nudes: advice for education settings working with children and young people - GOV.UK \(www.gov.uk\)](https://www.gov.uk/guidance/sharing-nudes-and-semi-nudes-advice-for-education-settings-working-with-children-and-young-people)

Cases where sexual imagery of people under 18 has been shared by adults and where sexual imagery of a person of any age has been shared by an adult to a child is child sexual abuse and should be responded to accordingly.

If a member of staff becomes aware of an incident involving youth produced sexual imagery, they should follow the child protection procedures and refer to the DSL as soon as possible. The member of staff should confiscate the device involved and set it to flight mode or, if this is not possible, turn it off. Staff should not view, copy or print the youth produced sexual imagery.

The DSL should hold an initial review meeting with appropriate school staff and subsequent interviews with the children involved (if appropriate). Parents should be informed at an early stage and involved in the process unless there is reason to believe that involving parents would put the child at risk of harm. At any point in the process if there is concern a young person has been harmed or is at risk of harm a referral should be made to MASH or the Police as appropriate.

Immediate referral at the initial review stage should be made to MASH/Police if;

- The incident involves an adult.
- There is good reason to believe that a young person has been coerced, blackmailed or groomed or if there are concerns about their capacity to consent (for example, owing to special education needs);
- What you know about the imagery suggests the content depicts sexual acts which are unusual for the child's development stage or are violent.
- The imagery involves sexual acts.
- The imagery involves anyone aged 12 or under.
- There is reason to believe a child is at immediate risk of harm owing to the sharing of the imagery, for example the child is presenting as suicidal or self-harming.

If none of the above apply then the DSL will use their professional judgement to assess the risk to pupils involved and may decide, with input from the Headteacher, to respond to the incident without escalation to MASH or the police. Such decisions will be recorded.

In applying judgement, the DSL will consider if;

- there is a significant age difference between the sender/receiver.
- there is any coercion or encouragement beyond the sender/receiver.
- the imagery was shared and received with the knowledge of the child in the imagery.
- the child is more vulnerable than usual i.e., at risk.
- there is a significant impact on the children involved.
- the image is of a severe or extreme nature.
- the child involved understands consent.
- the situation is isolated or if the image been more widely distributed.

- there other circumstances relating to either the sender or recipient that may add cause for concern i.e., difficult home circumstances.
- the children have been involved in incidents relating to youth produced imagery before.

If any of these circumstances are present the situation will be escalated according to our child protection procedures, including reporting to the police or MASH. Otherwise, the situation will be managed within the school.

The DSL will record all incidents of youth produced sexual imagery on CPOMS, including both the actions taken, actions not taken, reasons for doing so and the resolution in line with safeguarding recording procedures.

29. Allegations against staff

All school staff should take care not to place themselves in a vulnerable position with a child. It is always advisable for interviews or work with individual children or parents to be conducted in view of other adults.

Guidance about conduct and safe practice, including safe use of mobile phones by staff and volunteers will be given at induction.

We understand that a pupil may make an allegation against a member of staff or staff may have concerns about another staff member. If such an allegation is made, or information is received which suggests that a person may be unsuitable to work with children, the member of staff receiving the allegation or aware of the information, will immediately inform the Headteacher where possible in person or at least by email to sforster@tggsacademy.org.

The Headteacher on all such occasions will discuss the content of the allegation with the Local Authority Designated Officer (LADO) at the earliest opportunity and before taking any further action.

If the allegation made to a member of staff concerns the Headteacher, the person receiving the allegation will immediately inform the Chair of Trustees, Louisa Brown, via ahenwood@tggsacademy.org who will consult the LADO as above, without notifying the Headteacher first.

The school will follow the Torbay procedures for managing allegations against staff, procedures set out in KCSiE 2023 and the school's Managing Allegations policy and procedures.

Suspension of the member of staff, excluding the Headteacher, against whom an allegation has been made, needs careful consideration, and the Headteacher will seek the advice of the LADO and an HR Consultant in making this decision. In the event of an allegation against the Headteacher, the decision to suspend will be made by the Chair of Trustees with advice as above. Allegations regarding the proprietor of an independent school will be referred to the Local Authority Designated Officer (Independent Schools only).

We have a procedure for managing the suspension of a contract for a community user in the event of an allegation arising in that context.

Staff, parents, and trustees are reminded that publication of material that may lead to the identification of a teacher who is the subject of an allegation is prohibited by law. Publication includes verbal conversations or writing including content placed on social media sites.

30. Whistleblowing

We recognise that children cannot be expected to raise concerns in an environment where staff fail to do so.

All staff should be aware of their duty to raise concerns, where they exist, about the management of child protection, which may include the attitude or actions of colleagues, poor or unsafe practice and potential failures in the school's safeguarding arrangements. If it becomes necessary to consult outside the school, they should speak in the first instance, to the LADO following the Whistleblowing Policy.

The NSPCC whistleblowing helpline is available for staff who do not feel able to raise concerns regarding child protection failures internally. Staff can call: 0800 028 0285 line is available from 8:00 AM to 8:00 PM, Monday to Friday and email: help@nspcc.org.uk

Whistleblowing re the Headteacher should be made to the Chair of the Governing Body whose contact details are readily available to staff (as pertinent to setting).

31. Physical Intervention

We acknowledge that staff must only ever use physical intervention as a last resort, when a child is endangering him/herself or others, and that always it must be the minimal force necessary to prevent injury to another person. Such events should be recorded and signed by a witness.

Staff who are likely to need to use physical intervention will be appropriately trained.

We understand that physical intervention of a nature which causes injury or distress to a child may be considered under child protection or disciplinary procedures.

We recognise that touch is appropriate in the context of working with children, and all staff have been given 'Safe Practice' guidance to ensure they are clear about their professional boundary.

32. Confidentiality, sharing information and GDPR

All staff will understand that child protection issues warrant a high level of confidentiality, not only out of respect for the pupil and staff involved but also to ensure that information being released into the public domain does not compromise evidence.

School and college staff should be proactive in sharing as early as possible to help identify, assess and respond to risks or concerns about the safety and welfare of children, whether this is when problems are first emerging, or where a child is already known to local authority children's social care.

Staff should only discuss concerns with the DSL, Headteacher/principal, or chair of trustees (depending on who is the subject of the concern). That person will then decide who else needs to have the information and they will disseminate it on a 'need-to-know' basis.

Child protection information will be stored and handled in line with the Data Protection Act 2018¹⁷ and government guidance for sharing information.¹⁸

Information sharing is guided by the following principles:

- necessary and proportionate
- relevant

- adequate
- accurate
- timely
- secure

Fears about sharing information cannot be allowed to stand in the way of the need to promote the welfare and protect the safety of children.

33. Linked policies

This policy also links to our policies on:

- Behaviour
- Staff Behaviour Policy / Code of Conduct
- Whistleblowing
- Anti-bullying
- Health & Safety
- Allegations against staff
- Parental concerns
- Attendance
- Curriculum
- PSHE
- Teaching and Learning
- Administration of medicines
- Drug Education
- Relationships and Sex Education
- Physical intervention
- E-Safety, including staff use of mobile phones
- Risk Assessment
- Recruitment and Selection
- Child Sexual Exploitation
- Intimate Care
- Radicalisation and Extremism
- Data Protection/GDPR Guidance

¹⁷ The UK Data Protection Act 2018 (DPA 2018) is supplementary to the General Data Protection Regulation 2016 (the GDPR) and replaces DPA 1998.

¹⁸ [Information sharing: advice for practitioners \(publishing.service.gov.uk\)](https://www.publishing.service.gov.uk/government/uploads/system/uploads/attachment_data/file/674233/information-sharing-advice-for-practitioners.pdf)

Child on Child abuse – policy and procedure

1 Introduction

Our school, Torquay Girls' Grammar School recognises that children are vulnerable to and capable of abusing their peers. We take such abuse as seriously as abuse perpetrated by an adult. This includes verbal as well as physical abuse. Child-on-child abuse will not be tolerated or passed off as part of "banter" or "growing up". We are committed to a whole school approach to ensure the prevention, early identification, and appropriate management of child-on-child abuse within our school and beyond. In cases where child-on-child abuse is identified we will follow our child protection procedures, taking a contextual /extra familial approach to support all children and young people who have been affected by the situation.

Staff must challenge any form of derogatory and sexualised language or behaviour. Staff should be vigilant to sexualised/aggressive touching/grabbing DfE guidance situates sexual violence, sexual harassment, and harmful sexual behaviour in the context of developing a whole-school safeguarding culture, where sexual misconduct is seen as unacceptable, and not 'banter' or an inevitable part of growing up. Advice about tackling and reporting sexual harassment in schools and colleges is here: [Sexual violence and sexual harassment between children in schools and colleges \(publishing.service.gov.uk\)](https://www.publishing.service.gov.uk/government/uploads/system/uploads/attachment_data/file/614242/sexual-violence-and-sexual-harassment-between-children-in-schools-and-colleges.pdf)

We recognise that child-on-child abuse can manifest itself in many ways such as:

- Child Sexual Exploitation
- Sexting or youth produced digital imagery
- Up skirting
- Bullying
- Radicalisation
- Abuse in intimate relationships
- Children who display sexually harmful behaviour
- Gang association and serious violence (County Lines)
- Technology can be used for bullying and other abusive behaviour

Some of these behaviours will need to be handled with reference to other policies in school such as the behaviour policy, anti-bullying policy, and online safety policy, however, they should all be considered in the wider context of the school approach to safeguarding in general. It should be recognised that these issues are more likely to occur than not. Pupils will be protected from 'up skirting', bullying, homophobic, biphobic and transphobic behaviour, racism, sexism, and other forms of discrimination

This appendix concentrates on child-on-child abuse in the context of sexual harassment and sexual violence. It is compliant with the statutory guidance on child-on-child abuse as set out in KCSiE 2022 and should be read in conjunction with the TSCP and DCFP Safeguarding Policy and Procedures and , and any relevant Practice Guidance issued by it.

2 Aims

The policy will: -

Set out our strategies for preventing, identifying, and managing child-on-child abuse

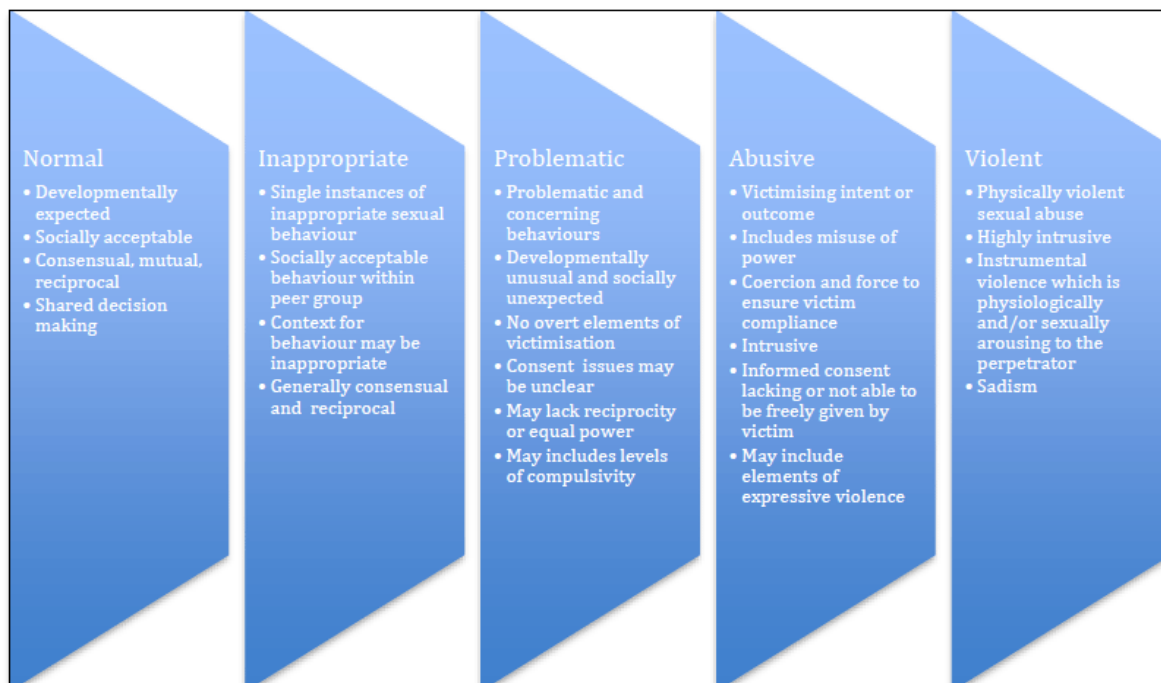
- Take a contextual/extra familial approach to safeguarding all children and young people involved.
- Acknowledge that children who have allegedly abused their peers or displayed harmful sexual behaviour are themselves vulnerable and may have been abused by peers, parents, or adults in the community.

- Understand that child-on-child abuse (Sexual violence and sexual harassment) can occur between two children of any age and sex or a group of children sexually assaulting or sexually harassing a single child or group of children. The impact of this behaviour on children can be very distressing and have an impact on academic achievement and emotional health and wellbeing. Sexual harassment and sexual violence may also occur online and offline.

3 The Context

All behaviour takes place on a spectrum. Understanding where a child's behaviour falls on a spectrum is essential to being able to respond appropriately to it. In this policy we recognise the importance of distinguishing between problematic and abusive sexual behaviour (Harmful Sexual Behaviour HSB). We are adopting the NSPCC definition of HSB as: - "Sexual behaviours expressed by children...that are developmentally inappropriate, may be harmful towards self or others, or be abusive towards another child...or adult."

We will also use Simon Hackett 's continuum model to demonstrate the range of sexual behaviours. Hackett (2010) has proposed a continuum model to demonstrate the range of sexual behaviours presented by children and young people, from those that are normal, to those that are highly deviant:



4 Vulnerable groups

We recognise that all children can be at risk however we acknowledge that some groups are more vulnerable. This can include experience of abuse within their family; living with domestic violence; young people in care; children who go missing; children with additional needs (SEN and/or disabilities); children who identify or are perceived as LGBT and/or have other protected characteristics under the Equalities Act 2010.

Whilst research tells us girls are more frequently identified as being abused by their peers and, girls are more likely to experience unwanted sexual touching in schools this is not confined to girls. Boys are less likely to report intimate relationship abuse and may display other behaviour such as antisocial behaviour. Boys report high levels of victimisation in areas where they are affected by gangs. We recognise that both boys and girls experience child-on-child abuse, but they do so in gendered ways.

All staff should be aware of indicators, which may signal that children are at risk from, or are involved with serious violent crime. These may include increased absence from school, a change in friendships or

relationships with older individuals or groups, a significant decline in performance, signs of self-harm or a significant change in wellbeing, or signs of assault or unexplained injuries. Unexplained gifts or new possessions could also indicate that children have been approached by, or are involved with, individuals associated with criminal networks or gangs.

For all vulnerable children it is important to try to ensure a safe space is available where they can speak out or share their worries.

5 Responding to Alleged Incidents

Responding to reports of sexual violence and sexual harassment

All reports of child-on-child abuse will be made on a case-by-case basis with the designated safeguarding lead or their deputy taking a leading role using their professional judgement and supported by other agencies such as social care or the police as required.

The immediate response to a report

- The school will take all reports seriously and will reassure the victim that they will be supported and kept safe.
- All staff will be trained to manage a report.
- Staff will not promise confidentiality as the concern will need to be shared further (for example, with the designated safeguarding lead or social care) staff will however only share the report with those people who are necessary to progress it.
- A written report will be made as soon after the interview as possible recording the facts as presented by the child. These may be used as part of a statutory assessment if the case is escalated later.
- Where the report includes an online element the school or college will follow advice on searching, screening, and confiscation. The staff will not view or forward images unless unavoidable and only if another member of staff (preferably the DSL) is present.
- The DSL will be informed as soon as possible.

6 Risk Assessment

When there has been a report of sexual violence, the DSL/DDSL will make an immediate risk and needs' assessment. Where there has been a report of sexual harassment, the need for a risk assessment should be considered on a case-by-case basis. The risk and needs' assessment should consider:

- The victim, especially their protection and support.
- The alleged perpetrator; and
- All the other children (and, if appropriate, adult students and staff) at the school or college, especially any actions that are appropriate to protect them;

Risk assessments will be recorded (written or electronic say where these are filed) and be kept under review. The DSL/DDSL will ensure they are engaging with MASH.

7 Action following a report of sexual violence and/or sexual harassment

Following an incident, we will consider

- The wishes of the victim in terms of how they want to proceed. This is especially important in the context of sexual violence and sexual harassment.
- The nature of the alleged incident(s), including whether a crime may have been committed and consideration of harmful sexual behaviour.
- The ages of the children involved.

- The developmental stages of the children involved.
- Any power imbalance between the children. For example, is the alleged perpetrator significantly older, more mature or more confident? Does the victim have a disability or learning difficulty?
- If the alleged incident is a one-off or a sustained pattern of abuse.
- Are there ongoing risks to the victim, other children, adult students or school or college staff, and other related issues and wider context?

8 Follow up Actions

Whilst the school or college establishes the facts of the case and starts the process of liaising with children's social care and the police:

- The perpetrator will be removed from any classes they share with the victim.
- We will consider how best to keep the victim and alleged perpetrator a reasonable distance apart on school or college premises and on transport to and from the school or college. These actions are in the best interests of both children and should not be perceived to be a judgment on the guilt of the alleged perpetrator.

9 Options to manage the report

Manage internally

(a) In some cases of sexual harassment, for example, one-off incidents, we may decide that the children concerned are not in need of early help or statutory intervention and that it would be appropriate to handle the incident internally, perhaps through utilising the behaviour and bullying policies and by providing pastoral support. This decision will be made based on the principle that sexual violence and sexual harassment is never acceptable and will not be tolerated. All decisions, and discussions around making these decisions will be recorded and stored (by whom, where).

(b) In line with (a) above, we may decide that the children involved do not require statutory interventions but may benefit from early help. Early help means providing support as soon as a problem emerges, at any point in a child's life. Providing early help is more effective in promoting the welfare of children than reacting later. Early help can be particularly useful to address non-violent harmful sexual behaviour and may prevent escalation of sexual violence.

Refer to MASH

(a) Where a child has been harmed, is at risk of harm, or is in immediate danger, we will make a referral to the MASH. Where statutory assessments are appropriate, the DSL/DDSL will be working alongside, and cooperating with, the relevant lead social worker. Collaborative working will help ensure the best possible package of coordinated support is implemented for the victim and, where appropriate, the alleged perpetrator and any other children that require support.

Reporting to the Police

(a) Any report to the police will generally be made through the MASH as above. The DSL/DDSL will follow local processes for referrals. Where a report of rape, assault by penetration or sexual assault is made, the starting point is this will be passed on to the police. Whilst the age of criminal responsibility is ten, if the alleged perpetrator is under ten, the starting principle of reporting to the police remains. The police will take a welfare, rather than a criminal justice, approach. Where a report has been made to the police, the school or college will consult the police and agree what information can be disclosed to staff and others, the alleged perpetrator and their parents or carers. They will also discuss the best way to protect the victim and their anonymity. Where there is a criminal investigation, we will work closely with the relevant agencies

to support all children involved (especially potential witnesses). Where required, advice from the police will be sought to help us.

(b) Whilst protecting children and/or taking any disciplinary measures against the alleged perpetrator, we will work closely with the police (and other agencies as required), to ensure any actions the school or college take do not jeopardise the police investigation.

The end of the criminal process

(a) If a child is convicted or receives a caution for a sexual offence, the school /academy will update its risk assessment, ensure relevant protections are in place for all children. We will consider any suitable action following our behaviour policy. If the perpetrator remains in school/academy we will be very clear as to our expectations regarding the perpetrator now they have been convicted or cautioned. This could include expectations regarding their behaviour and any restrictions we think are reasonable and proportionate about the perpetrator's timetable. Any conviction (even with legal anonymity reporting restrictions) is potentially going to generate interest among other pupils or students in the school or college. We will ensure all children involved are protected, especially from any bullying or harassment (including online).

(b) Where cases are classified as "no further action" (NFA'd) by the police or Crown Prosecution Service, or where there is a not guilty verdict, we will continue to offer support to the victim and the alleged perpetrator for as long as is necessary. A not guilty verdict or a decision not to progress with their case will likely be traumatic for the victim. The fact that an allegation cannot be substantiated does not necessarily mean that it was unfounded. We will continue to support all parties in this instance.

Whatever the response, it should be underpinned by the principle that there is a zero-tolerance approach to sexual violence and sexual harassment, and it is never acceptable and will not be tolerated.

10 Support for Children Affected by sexual assault

Support for victims of sexual assault is available from a variety of agencies (see Appendix 8). We will support the victim of sexual assault to remain in school but if they are unable to do so we will enable them to continue their education elsewhere. This decision will be made only at the request of the child and their family. If they are moved, we will ensure the new school is aware of the ongoing support they may need. The DSL will support this move. Where there is a criminal investigation, the alleged perpetrator will be removed from any shared classes with the victim, and we will also consider how best to keep them a reasonable distance apart on the school premises or on school transport. This is in the best interest of the children concerned and should not be perceived to be a judgement of guilt before any legal proceedings.

We will work closely with the police. Where a criminal investigation into a rape or assault by penetration leads to a conviction or caution, we may take suitable action, if we have not already done so. In all but the most exceptional of circumstances, the rape or assault is likely to constitute a serious breach of discipline and lead to the view that allowing the perpetrator to remain in the same school or college would seriously harm the education or welfare of the victim (and potentially other pupils or students).

Where a criminal investigation into sexual assault leads to a conviction or caution, we may, if we have not already done so, consider any suitable sanctions using our behaviour policy, including consideration of permanent exclusion. Where the perpetrator is going to remain at the school or college, the Headteacher would be to continue keeping the victim and perpetrator in separate classes and continue to consider the most appropriate way to manage potential contact on school and college premises and transport. The nature of the conviction or caution and wishes of the victim will be especially important in determining how to proceed in such cases.

Reports of sexual assault and sexual harassment will, in some cases, not lead to a report to the police (for a variety of reasons). In some cases, rape, assault by penetration, sexual assault or sexual harassment are reported to the police and the case is not progressed or are reported to the police and ultimately result in a not guilty verdict. None of this means the offence did not happen or that the victim lied. The process will have affected both victim and alleged perpetrator. Appropriate support will be provided to both as required and consideration given to sharing classes and potential contact as required on a case-by-case basis. All the above will be considered with the needs and wishes of the victim at the heart of the process (supported by parents and carers as required). Any arrangements should be kept under review.

11 Physical Abuse

While a clear focus of child-on-child abuse is around sexual abuse and harassment, physical assaults and initiation violence and rituals from pupils to pupils can also be abusive. These are equally not tolerated and if it is believed that a crime has been committed, will be reported to the police. The principles from the anti-bullying policy will be applied in these cases, with recognition that any police investigation will need to take priority. When dealing with other alleged behaviour which involves reports of, for example, emotional and/or physical abuse, staff can draw on aspects of Hackett's continuum (see above) to assess where the alleged behaviour falls on a spectrum and to decide how to respond. This could include, for example, whether it:

- is socially acceptable
- involves a single incident or has occurred over a period of time.
- is problematic and concerning
- involves any overt elements of victimisation or discrimination e.g., related to race, gender, sexual orientation, physical, emotional, or intellectual vulnerability
- involves an element of coercion or pre-planning
- involves a power imbalance between the child/children allegedly responsible for the behaviour
- involves a misuse of power

12 Online Behaviour

Many forms of child-on-child abuse have an element of online behaviour including behaviours such as cyberbullying and sexting. Policies and procedures concerning this type of behaviour can be found in the anti-bullying policy and online safety policy.

13 Prevention

Torquay Girl's Grammar School actively seeks to raise awareness of and prevent all forms of child-on-child abuse by:

- Educating all Trustees, SLT and staff volunteers, pupils, and parents about this issue. This will include training all Trustees, SLT and staff on the nature, prevalence, and effect of child-on-child abuse, and how to prevent, identify and respond to it. This includes:
 - (a) Contextual Safeguarding/extra familial abuse;
 - (b) The identification and classification of specific behaviours; and
 - (c) The importance of taking seriously all forms of child-on-child abuse (no matter how low level they may appear) and ensuring that no form of child-on-child abuse is ever dismissed as horseplay or teasing.
- Educating children about the nature and prevalence of child-on-child abuse via PSHE and the wider curriculum.
- Pupils are frequently told what to do if they witness or experience such abuse, the effect that it can have on those who experience it and the possible reasons for it, including vulnerability of those who inflict such abuse. In the student planners there is a visual flowchart to guide students.

- They are regularly informed about the school's approach to such issues, including its zero-tolerance policy towards all forms of child-on-child abuse.
- Engaging parents on this issue by: (a) Talking about it with parents, both in groups and one to one; (b) Asking parents what they perceive to be the risks facing their child and how they would like to see the school address those risks; (c) Involving parents in the review of school policies and lesson plans; and (d) Encouraging parents to hold the school to account on this issue.
- Ensuring that all child-on-child abuse issues are fed back to the school's safeguarding team so that they can spot and address any concerning trends and identify pupils who maybe in need of additional support. This is done via CPOMS and DSL.
- Challenging the attitudes that underlie such abuse (both inside and outside the classroom).
- Working with Trustees, Academy Trusts, SLT, all staff and volunteers, pupils and parents to address equality issues, to promote positive values, and to encourage a culture of tolerance and respect amongst all members of the school community.
- Creating conditions in which our pupils can aspire to and realise safe and healthy relationships.
- Creating a culture in which our pupils feel able to share their concerns openly, in a non-judgmental environment, and have them listened to.
- Responding to cases of child-on-child abuse promptly and appropriately.
- Joint provision of some aspects of PSHE, focusing on healthy relationships.

14 Multi-agency working

Torquay Girl's Grammar School actively engages with its local partners in relation to child-on-child abuse, and works closely with: TSCP, DCFP, MASH, Children's Social care, Early Help and/or other relevant agencies, other schools, and the community in general, including our young people and their families. The relationships the school has built with these partners are essential to ensuring that the school is able to prevent, identify early and appropriately handle cases of child-on-child abuse. They help the school

(a) To develop a good awareness and understanding of the different referral pathways that operate in its local area, as well as the preventative and support services which exist.

(b) To ensure that our pupils can access the range of services and support they need quickly.

(c) To support and help inform our local community's response to child-on-child abuse.

(d) To increase our awareness and understanding of any concerning trends and emerging risks in our local area to enable us to take preventative action to minimise the risk of these being experienced by our pupils. The school actively refers concerns/allegations of child-on-child abuse where necessary to MASH and other safeguarding partners. Children resident out of county but attending our school will be reported to their home Children's Services. In cases involving children who are subject to risk, harm, and abuse and who are cared for, the children's social worker will be informed and a coordinated approach to address any incidents or concerns will be required.

15 Prevention

As well as having strategies for dealing with incidents we will consider what we can do to foster healthy and respectful relationships between all pupils including through RSE and PSHE education. The most effective preventative education programme will be through a whole school approach that prepares pupils for life. The school has a clear set of values and standards, and these will be upheld and demonstrated throughout all aspects of school life. This will be underpinned by the school's behaviour policy and pastoral support system, and by a planned programme of evidence-based content delivered through the whole

curriculum. Such a programme will be appropriate to the age and stage of development (especially when considering SEND children and their cognitive understanding), and may tackle such issues as:

- Healthy and respectful relationships.
- What respectful behaviour looks like?
- Consent.
- Gender roles, stereotyping, and equality.
- Body confidence and self-esteem.
- Prejudiced behaviour.
- That sexual violence and sexual harassment is always wrong; and
- Addressing cultures of sexual harassment.

16 Some useful definitions:

Sexual Harassment This can be defined as ‘unwanted conduct of a sexual nature’ that can occur online and offline. In the context of this guidance this means in the context of child-on-child sexual harassment. Sexual harassment is likely to: violate a child’s dignity, and/or make them feel intimidated, degraded, or humiliated and/or create a hostile, offensive or sexualised environment.

It can include

- Sexual comments, such as: telling sexual stories, making lewd comments, making sexual remarks about clothes and appearance, and calling someone sexualised names.
- Sexual “jokes” or taunting.

Sexting: Sexting is when someone shares sexual, naked, or semi-naked images or videos of themselves or others or sends sexually explicit messages. They can be sent using mobiles, tablets, smartphones, laptops - any device that allows you to share media and messages.

Up skirting This typically involves taking a picture under a person’s clothing without them knowing, with the intention of viewing their genitals or buttocks to obtain sexual gratification, or cause the victim humiliation, distress, or alarm. It is now a criminal offence and may constitute sexual harassment. Cases of ‘up skirting’ have a mandatory requirement for being reported.

Sexual Violence In this guidance this refers to sexual violence in the context of child-on-child sexual violence. Children can and do abuse other children. Sexual violence covers a spectrum of behaviour. It can refer to sexual offences under the Sexual Offences Act 2013. This includes: -

Rape: A person (A) commits an offence of rape if: he intentionally penetrates the vagina, anus, or mouth of another person (B) with his penis, B does not consent to the penetration and A does not reasonably believe that B consents.

Assault by Penetration: A person (A) commits an offence if: s/he intentionally penetrates the vagina or anus of another person (B) with a part of her/his body or anything else, the penetration is sexual, B does not consent to the penetration and A does not reasonably believe that B consents.

Sexual Assault: A person (A) commits an offence of sexual assault if: s/he intentionally touches another person (B), the touching is sexual, B does not consent to the touching and A does not reasonably believe that B consents.

Consent: Consent is about having the freedom and capacity to choose. Consent to sexual activity may be given to one sort of sexual activity but not another, e.g. to vaginal but not anal sex or penetration with conditions, such as wearing a condom. Consent can be withdrawn at any time during sexual activity and each time activity occurs. Someone consents to vaginal, anal, or oral penetration only if s/he agrees by

choice to that penetration and has the freedom and capacity to make that choice. It is important to know that: -

- A child under the age of 13 can never consent to any sexual activity.
- The age of consent is 16.
- Sexual intercourse without consent is rape.

It is also important to differentiate between consensual sexual activity between children of a similar age and that which involves any power imbalance, coercion, or exploitation. Due to their additional training, the DSL (or deputy) should be involved and leading the school or college response. If in any doubt, they should seek expert advice. It is important that schools and colleges consider sexual harassment in broad terms. Sexual harassment (as set out above) creates an atmosphere that, if not challenged, can normalise inappropriate behaviours and provide an environment that may lead to sexual violence.

Harmful Sexual Behaviour (HSB) Children's sexual behaviour exists on a wide continuum, from normal and developmentally expected to inappropriate, problematic, abusive, and violent. Problematic, abusive, and violent sexual behaviour is developmentally inappropriate and may cause developmental damage. A useful umbrella term is "harmful sexual behaviour". The term has been widely adopted in child protection and is used in this advice. Harmful sexual behaviour can occur online and/or offline and can also occur simultaneously between the two. Harmful sexual behaviour should be considered in a child protection context. Useful guidance can be found in: - NSPCC and Research in Practice's Harmful Sexual Behaviour Framework: [Harmful sexual behaviour framework | NSPCC Learning](#)

Hazing/Initiation The practice of rituals, challenges, and other activities involving harassment, abuse or humiliation used as a way of initiating a person into a group.

Contextual Safeguarding and extra familial harm (Further information can be found here: [More about extra-familial risks | The Innovate Project](#))

All staff, but especially the DSL (or deputy) should be considering the context within which incidents and/or behaviours occur. This is known as contextual safeguarding, which simply means assessments of children should consider whether wider environmental factors are present in a child's life that are a threat to their safety and/or welfare. Additional considerations for schools When considering harmful sexual behaviour, ages, and the stages of development of the children are critical factors to consider. Sexual behaviour between children can be considered harmful if one of the children is much older, particularly if there is more than two years' difference or if one of the children is pre-pubescent and the other is not. However, a younger child can abuse an older child, particularly if they have power over them, for example, if the older child is disabled or smaller in stature. Schools and colleges should ensure that their response to sexual violence and sexual harassment between children of the same sex is equally robust as it is for sexual violence and sexual harassment between children of the opposite sex.

Recognising signs of child abuse

Categories of Abuse:

- Physical Abuse
- Emotional Abuse (including Domestic Abuse)
- Sexual Abuse (including child sexual exploitation)
- Neglect

Signs of Abuse in Children:

The following non-specific signs may indicate something is wrong:

- Significant change in behaviour
- Extreme anger or sadness
- Aggressive and attention-needing behaviour
- Suspicious bruises with unsatisfactory explanations
- Lack of self-esteem
- Self-injury
- Depression and/or anxiousness
- Age-inappropriate sexual behaviour
- Child Sexual Exploitation
- Criminality
- Substance abuse
- Mental health problems
- Poor attendance

Risk Indicators

The factors described in this section are frequently found in cases of child abuse. Their presence is not proof that abuse has occurred, but:

- Must be regarded as indicators of the possibility of significant harm
- Justifies the need for careful assessment and discussion with designated / named / lead person, manager, (or in the absence of all those individuals, an experienced colleague)
- May require consultation with and / or referral to Children's Services

The absence of such indicators does not mean that abuse or neglect has not occurred.

In an abusive relationship the child may:

- Appear frightened of the parent/s
- Act in a way that is inappropriate to her/his age and development (though full account needs to be taken of different patterns of development and different ethnic groups)

The parent or carer may:

- Persistently avoid child health promotion services and treatment of the child's episodic illnesses
- Have unrealistic expectations of the child

- Frequently complain about/to the child and may fail to provide attention or praise (high criticism/low warmth environment)
- Be absent or misusing substances
- Persistently refuse to allow access on home visits
- Be involved in domestic abuse

Staff should be aware of the potential risk to children when individuals, previously known or suspected to have abused children, move into the household.

Recognising Physical Abuse

The following are often regarded as indicators of concern:

- An explanation which is inconsistent with an injury
- Several different explanations provided for an injury
- Unexplained delay in seeking treatment
- The parents/carers are uninterested or undisturbed by an accident or injury
- Parents are absent without good reason when their child is presented for treatment
- Repeated presentation of minor injuries (which may represent a “cry for help” and if ignored could lead to a more serious injury)
- Family use of different doctors and A&E departments
- Reluctance to give information or mention previous injuries

Bruising

Children can have accidental bruising, but the following must be considered as non-accidental unless there is evidence, or an adequate explanation provided:

- Any bruising to a pre-crawling or pre-walking baby
- Bruising in or around the mouth, particularly in small babies which may indicate force feeding
- Two simultaneous bruised eyes, without bruising to the forehead, (rarely accidental, though a single bruised eye can be accidental or abusive)
- Repeated or multiple bruising on the head or on sites unlikely to be injured accidentally
- Variation in colour possibly indicating injuries caused at different times
- The outline of an object used e.g., belt marks, handprints or a hairbrush
- Bruising or tears around, or behind, the earlobe/s indicating injury by pulling or twisting
- Bruising around the face
- Grasp marks on small children
- Bruising on the arms, buttocks and thighs may be an indicator of sexual abuse

Bite Marks

Bite marks can leave clear impressions of the teeth. Human bite marks are oval or crescent shaped. Those over 3 cm in diameter are more likely to have been caused by an adult or older child.

A medical opinion should be sought where there is any doubt over the origin of the bite.

Burns and Scalds

It can be difficult to distinguish between accidental and non-accidental burns and scalds and will always require experienced medical opinion. Any burn with a clear outline may be suspicious e.g.:

- Circular burns from cigarettes (but may be friction burns if along the bony protuberance of the spine)

- Linear burns from hot metal rods or electrical fire elements
- Burns of uniform depth over a large area
- Scalds that have a line indicating immersion or poured liquid (a child getting into hot water is his/her own accord will struggle to get out and cause splash marks)
- Old scars indicating previous burns/scalds which did not have appropriate treatment or adequate explanation

Scalds to the buttocks of a small child, particularly in the absence of burns to the feet, are indicative of dipping into a hot liquid or bath.

Fractures

Fractures may cause pain, swelling and discolouration over a bone or joint. Non-mobile children rarely sustain fractures.

There are grounds for concern if:

- The history provided is vague, non-existent, or inconsistent with the fracture type
- There are associated old fractures
- Medical attention is sought after a period of delay when the fracture has caused symptoms such as swelling, pain or loss of movement
- There is an unexplained fracture in the first year of life

Scars

Many scars or scars of different sizes or ages, or on different parts of the body, may suggest abuse.

Recognising Emotional Abuse

Emotional abuse may be difficult to recognise, as the signs are usually behavioural rather than physical. The manifestations of emotional abuse might also indicate the presence of other kinds of abuse. The indicators of emotional abuse are often also associated with other forms of abuse.

The following may be indicators of emotional abuse:

- Developmental delay
- Abnormal attachment between a child and parent/carer e.g., anxious, indiscriminate, or no attachment
- Indiscriminate attachment or failure to attach
- Aggressive behaviour towards others
- Scapegoated within the family
- Frozen watchfulness, particularly in pre-school children
- Low self-esteem and lack of confidence
- Withdrawn or seen as a “loner” – difficulty relating to others

Recognising Signs of Sexual Abuse

Boys and girls of all ages may be sexually abused and are frequently scared to say anything due to guilt and/or fear. This is particularly difficult for a child to talk about, and full account should be taken of the cultural sensitivities of any individual child/family.

Recognition can be difficult unless the child makes an allegation and is believed. There may be no physical signs and indications are likely to be emotional/behavioural.

Some behavioural indicators associated with this form of abuse are:

- Inappropriate sexualised conduct
- Sexually explicit behaviour, play or conversation, inappropriate to the child’s age

- Continual and inappropriate or excessive masturbation
- Self-harm (including eating disorder), self-mutilation and suicide attempts
- Involvement in prostitution or indiscriminate choice of sexual partners
- An anxious unwillingness to remove clothes e.g. for sports events (but this may be related to cultural norms or physical difficulties)

Some physical indicators associated with this form of abuse are:

- Pain or itching of genital area
- Blood on underclothes
- Pregnancy in a younger girl where the father of the child is not identified
- Physical symptoms such as injuries to the genital or anal area, bruising to buttocks, abdomen and thighs, sexually transmitted disease, presence of semen on vagina, anus, external genitalia, or clothing

It is rare for children to make false allegations about sexual abuse and any allegations should always be taken seriously.

Recognising Neglect

Evidence of neglect is built up over a period and can cover different aspects of parenting. Indicators include:

- Failure by parents or carers to meet the basic essential needs e.g., adequate food, clothes, warmth, hygiene and medical care
- A child seen to be listless, apathetic and unresponsive with no apparent medical cause
- Failure of child to grow within normal expected pattern, with accompanying weight loss
- Child thrives away from home environment
- Child frequently absent from school
- Child left with adults who are intoxicated or violent
- Child abandoned or left alone for excessive periods

Sexual Abuse & Sexual Harassment

The boundary between what is abusive and what is part of normal childhood or youthful experimentation can be blurred. There should be a zero-tolerance attitude towards any form of derogatory behaviour. The determination of whether behaviour is developmental, inappropriate, or abusive will hinge around the related concepts of true consent, power imbalance and exploitation. This may include children and young people who exhibit a range of sexually problematic behaviour such as indecent exposure, obscene telephone calls, fetishism, bestiality and sexual abuse against adults, peers, or children. Staff should be vigilant to:

- bullying (including cyberbullying)
- physical abuse such as hitting, kicking, shaking, biting, hair pulling, or otherwise causing physical harm
- sexual violence and sexual harassment
- sexting (also known as youth produced sexual imagery)
- initiation/hazing type violence and rituals
- up skirting

Developmental Sexual Activity

Encompasses those actions that are to be expected from children and young people as they move from infancy through to an adult understanding of their physical, emotional, and behavioural relationships with each other. Such sexual activity is essentially information gathering and experience testing. It is characterised by mutuality and of the seeking of consent.

Inappropriate Sexual Behaviour

Can be inappropriate socially, in appropriate to development, or both. In considering whether behaviour fits into this category, it is important to consider what negative effects it has on any of the parties involved and what concerns it raises about a child or young person. It should be recognised that some actions may be motivated by information seeking, but still cause significant upset, confusion, worry, physical damage, etc. It may also be that the behaviour is “acting out” which may derive from other sexual situations to which the child or young person has been exposed. If an act appears to have been inappropriate, there may still be a need for some form of behaviour management or intervention. For some children, educative inputs may be enough to address the behaviour.

Abusive sexual activity includes any behaviour involving coercion, threats, aggression together with secrecy, or where one participant relies on an unequal power base. To determine the nature of the incident the following factors should be given consideration.

The presence of exploitation in terms of:

Equality – consider differentials of physical, cognitive, and emotional development, power and control and authority, passive, and assertive tendencies

Informed consent - In 2015 (recirculated in 2018) Thames Valley police produced a video on the topic of consent using the analogy of asking for a cup of tea. [Consent is everything](#). The video is reproduced on the Devon and Cornwall website alongside a range of resources including a good consent guide <https://www.devon-cornwall.police.uk/youth/15-19/good-consent-guide/>

They highlight the following: Sexual consent is where a person has the freedom to agree to sexual activity. It is vital the person instigating sex makes sure their partner is participating freely and readily. The website sets out what the consequences are for a person who takes part in sexual activity without seeking consent:

- Rape is a crime.
- It happens to men and women. Rape occurs when a person penetrates another person's mouth, anus, or vagina with their penis without consent.
- If someone initially agrees to have sex, but later withdraws their consent and the other person continues anyway, that person will have committed rape.
- Being drunk or on drugs is not a defence.
- Being accused of rape has life-changing consequences:
- Suspects will be arrested and questioned by the police.
- Their belongings will be seized, and DNA taken, analysed and added to a database.
- A suspect charged with rape will appear in Crown Court before a judge and jury for trial.
- A convicted rapist could be sent to prison. The maximum sentence is life imprisonment.
- Offenders would be ordered to sign the sex offenders register.
- After being convicted it may be harder to get a job or a place at university.
- Offenders may not be able to travel to some countries.
- Offenders may also damage or even lose relationships with friends and families.
- To have sex without consent is to commit rape.

For there to be informed consent the following must be present

- Understanding that is proposed based on age, maturity, development level, functioning and experience
- Knowledge of society's standards for what is being proposed
- Awareness of potential consequences and alternatives
- Assumption that agreements or disagreements will be respected equally
- Voluntary decision
- Mental competence

Coercion – the young perpetrator who abuses may use techniques like bribing, manipulation and emotional threats of secondary gains and losses that is loss of love, friendship, etc. Some may use physical force, brutality or the threat of these regardless of victim resistance. See Appendix 4

In evaluating sexual behaviour of children and young people, the above information should be used only as a guide. The TSPC offer guidance to sexually harmful behaviour in its guides to harmful behaviour generally: [TSCP Harmful Behaviour Guide and policy](#)

Exploitation (including Child Sex Exploitation, Child Criminal Exploitation and County Lines)

The following list of indicators is not exhaustive or definitive, but it does highlight common signs which can assist professionals in identifying children or young people who may be victims of sexual or criminal exploitation.

Signs include:

- going missing from home or school
- regular school absence/truancy
- underage sexual activity
- inappropriate sexual or sexualised behaviour
- sexually risky behaviour, 'swapping' sex
- repeat sexually transmitted infections
- in girls, repeat pregnancy, abortions, miscarriage
- receiving unexplained gifts or gifts from unknown sources
- having multiple mobile phones and worrying about losing contact via mobile
- online safety concerns such as youth produced sexual imagery or being coerced into sharing explicit images.
- having unaffordable new things (clothes, mobile) or expensive habits (alcohol, drugs)
- changes in the way they dress
- going to hotels or other unusual locations to meet friends
- seen at known places of concern
- moving around the country, appearing in new towns or cities, not knowing where they are
- getting in/out of different cars driven by unknown adults
- having older boyfriends or girlfriends
- contact with known perpetrators
- involved in abusive relationships, intimidated and fearful of certain people or situations
- hanging out with groups of older people, or anti-social groups, or with other vulnerable peers
- associating with other young people involved in sexual exploitation
- recruiting other young people to exploitative situations
- truancy, exclusion, disengagement with school, opting out of education altogether
- unexplained changes in behaviour or personality (chaotic, aggressive, sexual)
- mood swings, volatile behaviour, emotional distress
- self-harming, suicidal thoughts, suicide attempts, overdosing, eating disorders
- drug or alcohol misuse
- getting involved in crime
- police involvement, police records
- involved in gangs, gang fights, gang membership
- injuries from physical assault, physical restraint, sexual assault.

Consent

Gillick competency and Fraser guidelines help people who work with children to balance the need to listen to children's wishes with the responsibility to keep them safe. When practitioners are trying to decide whether a child is mature enough to make decisions about things that affect them, they often talk about

whether the child is 'Gillick competent' or whether they meet the 'Fraser guidelines'. Although the two terms are frequently used together and originate from the same legal case, there are distinct differences between them but often refer to children in relation to health issues? [NSPCC Gillick Competent Fraser Guidelines](#)

In relation to children who are exploited consideration should be given to if a child is consenting but

- the structure of grooming by their abuser means they do not understand the power differential, and they will often side with their abuser (coerced abused consent)
- they believe that their own and or families survival depends on them and therefore they are exploited for money, food, drugs and or accommodation (survival abused consent)
- normalising violent non – consenting sex (given access to pornography, sexting, music lyrics, gang culture, peer pressure) other young people sometimes groom others to get out of being abused or assaulted themselves (abused normalised consent).
- professionals unconsciously normalise the abuse i.e., “all 14 year olds have sex” (professional condoned abused consent)

County lines is a term used to describe gangs and organised criminal networks involved in the exporting of illegal drugs (primarily crack cocaine and heroin) into one or more importing areas (within the UK), using dedicated mobile phone lines or other form of 'deal line.'

Exploitation is an integral part of the county lines offending model with children and vulnerable adults being exploited to move (and store) drugs and money. The same grooming models used to coerce, intimidate, and abuse individuals for sexual and criminal exploitation are also used for grooming vulnerable individuals for county lines.

Female Genital Mutilation (FGM)

It is essential that staff are aware of FGM practices and the need to look for signs, symptoms, and other indicators of FGM. If a member of staff, in the course of their work, discovers that an act of FGM appears to have been carried out, the member of staff must report this to the Police.

Female Genital Mutilation (FGM) is illegal in England and Wales under the FGM Act 2003 (“the 2003 Act”). It is a form of child abuse and violence against women. FGM comprises all procedures involving partial or total removal of the external female genitalia for non-medical reasons.

Section 5B of the 2003 Act¹ introduces a mandatory reporting duty which requires regulated health and social care professionals and teachers in England and Wales to report ‘known’ cases of FGM in under 18s which they identify in the course of their professional work to the police. The duty came into force on 31 October 2015.

What is FGM?

It involves procedures that intentionally alter/injure the female genital organs for non-medical reasons.

4 types of procedure:

Type 1 Clitoridectomy – partial/total removal of clitoris

Type 2 Excision – partial/total removal of clitoris and labia minora

Type 3 Infibulation entrance to vagina is narrowed by repositioning the inner/outer labia

Type 4 all other procedures that may include: pricking, piercing, incising, cauterising and scraping the genital area.

Why is it carried out?

Belief that:

- FGM brings status/respect to the girl – social acceptance for marriage
- Preserves a girl’s virginity
- Part of being a woman / rite of passage
- Upholds family honour
- Cleanses and purifies the girl
- Gives a sense of belonging to the community
- Fulfils a religious requirement
- Perpetuates a custom/tradition
- Helps girls be clean / hygienic
- Is cosmetically desirable
- Mistakenly believed to make childbirth easier

Is FGM legal?

FGM is internationally recognised as a violation of human rights of girls and women. It is illegal in most countries including the UK.

Circumstances and occurrences that may point to FGM happening are:

- Child talking about getting ready for a special ceremony

- Family taking a long trip abroad
- Child's family being from one of the 'at risk' communities for FGM (Kenya, Somalia, Sudan, Sierra Leone, Egypt, Nigeria, Eritrea as well as non-African communities including Yemeni, Afghani, Kurdistan, Indonesia and Pakistan)
- Knowledge that the child's sibling has undergone FGM
- Child talks about going abroad to be 'cut' or to prepare for marriage

Signs that may indicate a child has undergone FGM:

- Prolonged absence from school and other activities
- Behaviour change on return from a holiday abroad, such as being withdrawn and appearing subdued
- Bladder or menstrual problems
- Finding it difficult to sit still and looking uncomfortable
- Complaining about pain between the legs
- Mentioning something somebody did to them that they are not allowed to talk about
- Secretive behaviour, including isolating themselves from the group
- Reluctance to take part in physical activity
- Repeated urinal tract infection
- Allegation

The 'One Chance' rule

As with Forced Marriage there is the 'One Chance' rule. It is essential that settings /schools/colleges act **without delay** and make a referral to children's services.

Domestic Abuse (including Operation Encompass)

How does it affect children?

Children can be traumatised by seeing and hearing violence and abuse. They may also be directly targeted by the abuser or take on a protective role and get caught in the middle. In the long term this can lead to serious long lasting emotional and psychological impact on children. In some cases, children may blame themselves for the abuse or may have had to leave the family home as a result. Government legislation enacted in 2021 recognises that a child who sees or hears, or experiences the effects of, domestic abuse and is related to the person being abused or the perpetrator is also to be regarded as a victim of domestic abuse

In addition, the age limit for criminal offences related to domestic abuse was lowered from 18 to 16, to recognise that young people can experience abuse in their relationships.

What are the signs to look out for?

Children affected by domestic abuse reflect their distress in a variety of ways. They may change their usual behaviour and become withdrawn, tired, start to wet the bed, and have behavioural difficulties. They may not want to leave their house or may become reluctant to return. Others will excel, using their time in your care as a way to escape from their home life. None of these signs are exclusive to domestic abuse so when you are considering changes in behaviours and concerns about a child, think about whether domestic abuse may be a factor.

What should I do if I suspect a family is affected by domestic abuse?

Contact: <http://www.areyouok.co.uk/>

If you are concerned about a child or young person in Torbay, please contact the [Multi Agency Safeguarding Hub](#) on 01803 208100 or email mash@torbay.gov.uk For Devon you can contact the MASH on 0345 155 1071 or email mashsecure@devon.gov.uk

Torbay Domestic Abuse Service (TDAS) provides support for men, women and children across Torbay who need advice and protection from domestic abuse. Through confidential advice, support, and crisis accommodation, we can help you to make informed decisions about your future, safety, health, housing and other concerns. [TDAS](#) 0800 2000 247

National Domestic Abuse Helpline Refuge runs the National Domestic Abuse Helpline, available 24hour a day 0808 2000 247 and its website offers guidance and support for potential victims. [Refuge Against Domestic Violence - Help for women & children.](#)

Operation Encompass helps police and schools work together to provide emotional and practical help for children. Police will inform the 'key adult' within school if they have been called to an incident of domestic abuse, where there are children in the household before registration the next day.

National Operation Encompass Teachers' Helpline

From 1st September 2020 the National Operation Encompass Teachers' Helpline is once again available. Funded by the Home Office, the advice line is free, and calls are answered by trained Educational and Clinical Psychologists.

You can call the helpline on 0204 513 9990 (Weekdays 8 - 11.00am) Website: [Operation Encompass](#)

Indicators of vulnerability to radicalisation.

1. Radicalisation refers to the process by which a person comes to support terrorism and forms of extremism leading to terrorism.
2. Extremism is defined by the Government in the Prevent Strategy as:

Vocal or active opposition to fundamental British values, including democracy, the rule of law, individual liberty and mutual respect and tolerance of different faiths and beliefs. We also include in our definition of extremism calls for the death of members of our armed forces, whether in this country or overseas.
3. Extremism is defined by the Crown Prosecution Service as:
The demonstration of unacceptable behaviour by using any means or medium to express views which:
 - Encourage, justify, or glorify terrorist violence in furtherance of particular beliefs.
 - Seek to provoke others to terrorist acts.
 - Encourage other serious criminal activity or seek to provoke others to serious criminal acts; or
 - Foster hatred which might lead to inter-community violence in the UK.

There is no such thing as a “typical extremist”: those who become involved in extremist actions come from a range of backgrounds and experiences, and most individuals, even those who hold radical views, do not become involved in violent extremist activity.

Pupils may become susceptible to radicalisation through a range of social, personal, and environmental factors - it is known that violent extremists exploit vulnerabilities in individuals to drive a wedge between them and their families and communities. It is vital that school staff can recognise those vulnerabilities.

Indicators of vulnerability include:

- Identity Crisis – the student / pupil is distanced from their cultural / religious heritage and experiences discomfort about their place in society.
- Personal Crisis – the student / pupil may be experiencing family tensions; a sense of isolation; and low self-esteem; they may have dissociated from their existing friendship group and become involved with a new and different group of friends; they may be searching for answers to questions about identity, faith and belonging.
- Personal Circumstances – migration; local community tensions; and events affecting the student / pupil’s country or region of origin may contribute to a sense of grievance that is triggered by personal experience of racism or discrimination or aspects of Government policy.
- Unmet Aspirations – the student / pupil may have perceptions of injustice; a feeling of failure; rejection of civic life.
- Experiences of Criminality – which may include involvement with criminal groups, imprisonment, and poor resettlement / reintegration.
- Special Educational Need – students / pupils may experience difficulties with social interaction, empathy with others, understanding the consequences of their actions and awareness of the motivations of others.

However, this list is not exhaustive, nor does it mean that all young people experiencing the above are at risk of radicalisation for the purposes of violent extremism.

More critical risk factors could include:

- Being in contact with extremist recruiters.
- Accessing violent extremist websites, especially those with a social networking element.
- Possessing or accessing violent extremist literature.
- Using extremist narratives and a global ideology to explain personal disadvantage.
- Justifying the use of violence to solve societal issues.
- Joining or seeking to join extremist organisations; and
- Significant changes to appearance and / or behaviour.
- Experiencing a high level of social isolation resulting in issues of identity crisis and / or personal crisis.

The Prevent duty ensures schools and colleges have 'due regard' to the need to prevent people from being drawn into terrorism.

Channel is the voluntary, confidential support programme which focuses on providing support at an early stage to individuals that have been identified as being vulnerable to radicalisation. Prevent referrals may be passed to the multi-agency Channel panel to determine whether individuals require support.

[Revised Prevent duty guidance: for England and Wales - GOV.UK \(www.gov.uk\)](#) (school specific paras 57-76)

[The Prevent Duty, for Further Education Institutions](#)

Guidance on Channel <https://www.gov.uk/government/publications/channel-guidance>

Further information can be obtained from the Home Office website.

Police and Criminal Evidence Act (1984) – Code C (PACE)

The DSL and DDSL's are aware of the requirement for children to have an appropriate adult when in contact with Police officers who suspect them of an offence.

PACE states that anyone who appears to be under 18, shall, in the absence of clear evidence that they are older, be treated as a child for the purposes of this Code and any other Code.

PACE also states that If at any time an officer has any reason to suspect that a person of any age may be vulnerable, then that person is entitled to be accompanied by an appropriate adult at any point.

The DSL or DDSL will communicate any vulnerabilities known by the school to any police officer who wishes to speak to a pupil about an offence they may suspect. This communication will be recorded on CPOMS.

If having been informed of the vulnerabilities, the designated safeguarding lead (or deputy) does not feel that the officer is acting in accordance with PACE, they should ask to speak with a supervisor or contact 101 to escalate their concerns.

A person whom there are grounds to suspect of an offence must be cautioned⁽²⁰⁾ before questioned about an offence⁽²¹⁾, or asked further questions if the answers they provide the grounds for suspicion, or when put to them the suspect's answers or silence, (i.e. failure or refusal to answer or answer satisfactorily) may be given in evidence to a court in a prosecution.

A Police Officer must not caution a juvenile or a vulnerable person unless the appropriate adult is present. If a child or a vulnerable person is cautioned in the absence of the appropriate adult, the caution must be repeated in the appropriate adult's presence.

The appropriate adult' means, in the case of a child:

- I. the parent, guardian or, if the juvenile is in the care of a local authority or voluntary organisation, a person representing that authority or organisation.
- II. a social worker of a local authority

²⁰ The police caution is: "You do not have to say anything. But it may harm your defence if you do not mention when questioned something which you later rely on in Court. Anything you do say may be given in evidence."

²¹ A person need not be cautioned if questions are for other necessary purposes, e.g.: (a) solely to establish their identity or ownership of any vehicle; to obtain information in accordance with any relevant statutory requirement; in furtherance of the proper and effective conduct of a search, e.g. to determine the need to search in the exercise of powers of stop and search or to seek co-operation while carrying out a search; or to seek verification of a written record.

Failing these, some other responsible adult aged 18 or over who is not:

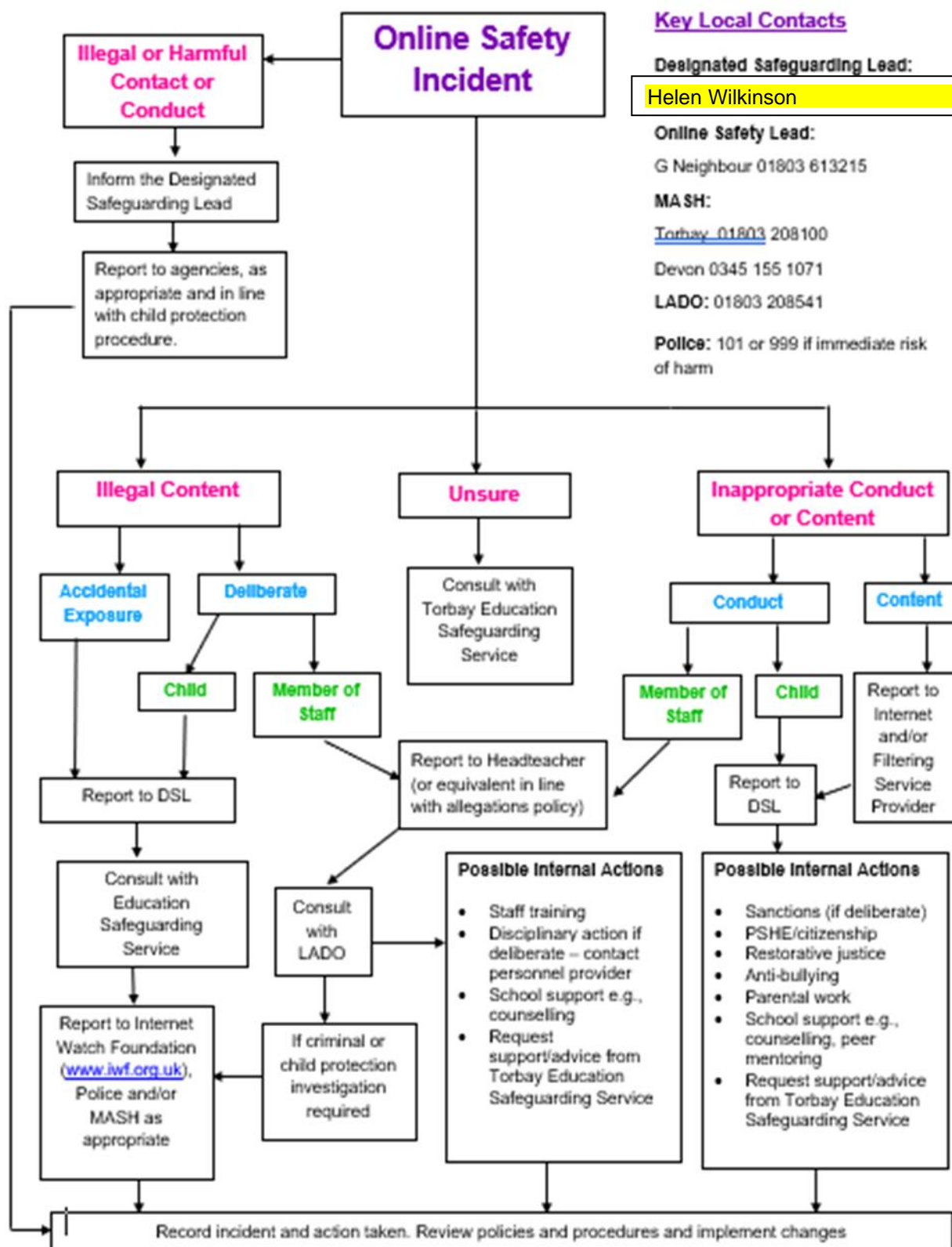
- I. a police officer;
- II. employed by the police;
- III. under the direction or control of the chief officer of a police force; or

IV. a person who provides services under contractual arrangements (but without being employed by the chief officer of a police force), to assist that force in relation to the discharge of its chief officer's functions,

Further information can be found in the Statutory guidance - PACE Code C 2019.

<https://www.gov.uk/government/publications/pace-code-c-2019/pace-code-c-2019-accessible>

Responding to an Online Safety Concern



Appendix 10

Further advice on child protection is available from:

NSPCC: <http://www.nspcc.org.uk/>

Childline: <http://www.childline.org.uk/pages/home.aspx>

Anti-Bullying Alliance: <http://anti-bullyingalliance.org.uk/>

Beat Bullying: <http://www.beatbullying.org/>

Childnet International - making the internet a great and safe place for children. Includes resources for professionals and parents <http://www.childnet.com/>

Thinkuknow (includes resources for professionals and parents) <https://www.thinkuknow.co.uk/>

Safer Internet Centre <http://www.saferinternet.org.uk/>

Transgender <http://www.mermaidsuk.org.uk/>
[Intercom trust transgender guidance](#)

Appendix 11

Safeguarding contacts

In an emergency call 999

Torbay residents

For Targeted Help, Consultation and Enquiries please contact: Telephone: 01803 208525 (9am-12pm)
Email: targetedhelp@torbay.gov.uk

For MASH please contact: Telephone: 01803 208100 Email: MASH@torbay.gov.uk

MASH Referral Form available at <http://www.torbaysafeguarding.org.uk/workers/hub/>

For the **Emergency Duty Team** out of working hours please contact: 0300 456 4876

For all LADO enquiries Duty LADO 01803 208541 or email cpunit@torbay.gov.uk

Devon Residents:

For MASH, Early Help, Consultation and Enquiries please contact:

Telephone: **0345 155 1071**

Email: mashsecure@devon.gov.uk

Fax: 01392 448951

Enquiry Form available at:

<https://new.devon.gov.uk/making-a-mash-enquiry>

Post: **Multi-Agency Safeguarding Hub, P.O. Box 723, Exeter EX1 9QS**

Emergency Duty Team out of hours 0845 6000 388

Locality Early Help Mailbox

North: earlyhelpnorthsecuremailbox@devon.gov.uk

Mid & East: earlyhelpmideastsecuremailbox@devon.gov.uk

South & West: earlyhelpsouthsecuremailbox@devon.gov.uk

Exeter: earlyhelpexetersecuremailbox@devon.gov.uk

For emergencies outside of office hours please call:

0345 600 0388 or **0345 600 0388**

Police non-emergency: 101

Appendix 12

Version No	Date	Summary of Changes
3.0	4.1.2022	Page 3 – Personnel Updates
3.1	1.9.2022	Page 2 – Appendix number and Appendix 8 added. Page – 3 – Personnel Updates Throughout Peer-on-Peer to Child-on-Child Throughout KCSIE 2021 changed to 2022 Page 4- Addition of Equality Act in consideration to writing policy. Page 5 – Expansion of MASH Acronym for understanding. Page 7 – Addition of act of staff Level 3 trained wearing yellow lanyards to be visible to staff and students. Page 7 – Addition of children’s services database Page 8 – Correction or ‘letting’ to ‘vetting’ Page 9 – Addition of DSL Liaising with headteacher if to inform her of ongoing enquiries under section 47 of the Children Act. Page 9 - Addition of DSL Liaising with the Headteacher to ensure school is adhering to DFE Searching, screening and confiscation act. Page 9 – Addition of ensuring all students files are transferred within 5 days of mid year transfer or the first 5 days of a new term.

		<p>Page 10 – Expansion of TSCP and DCFP Acronym to support understanding.</p> <p>Page 12 – addition that serious safeguarding concerns should be reported to the DSL immediately in person.</p> <p>Page 12 – Addition that all records must be recorded on CPOMS.</p> <p>Page 13 – Addition that paper statements must be signed and uploaded to CPOMS</p> <p>Page 15 – Addition of LGBTQ+ community or students perceived as being part of the community to those more vulnerable to harm.</p> <p>Page 20 – Addition and reordering of most frequently used social media sites.</p> <p>Page 24 – Addition of Headteacher and Chair of trustee details for quick reference for staff using the policy.</p> <p>Page 27 addition of DCFP for consistency across policy.</p> <p>Page 28 – Addition of ensuring a safe space is available for students.</p> <p>Page 31 – Correction of Principal to Headteacher</p> <p>Page 32/33 – Addition of school name</p> <p>Page 46 – Addition of a new appendix outlining PACE Act.</p>
3.2	04/09/2023	<p>Page 8 – Addition of clarity that the school undertakes online searches during recruitment process</p> <p>Page 9 – Addition of staff undertaking training for online filtering and that standards are met and monitored.</p> <p>Page 12 – Addition of child absent from education</p> <p>Page 21 – Addition more detailed information regarding child absent from education.</p> <p>Page 48 – Change of name to Helen Wilkinson as DSL</p> <p>Page 50 – Change to Devon out of hours phone number.</p>